

Issue
4

2nd EDITION

ASTROBIOLOGY

The Story of our Search for Life in the Universe



Produced by the NASA
Astrobiology Program to
commemorate 50 years of
Exobiology and Astrobiology
at NASA.

Astrobiology

A History of Exobiology and Astrobiology at NASA

This is the story of life in the Universe—or at least the story as we know it so far. As scientists, we strive to understand the environment in which we live and how life relates to this environment. As astrobiologists, we study an environment that includes not just the Earth, but the entire Universe.

The year 2010 marked 50 years of Exobiology and Astrobiology research at the National Aeronautics and Space Administration (NASA). To celebrate, the Astrobiology Program commissioned this graphic history. It tells the story of some of the most important people and events that have shaped the science of Exobiology and Astrobiology. At only 50 years old, this field is relatively young. However, as you will see, the questions that astrobiologists are trying to answer are as old as humankind.

Concept & Story

Mary Voytek
Linda Billings
Aaron L. Gronstal

Artwork

Aaron L. Gronstal

Script

Aaron L. Gronstal

Editor

Linda Billings

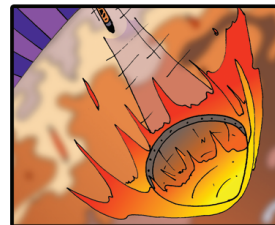
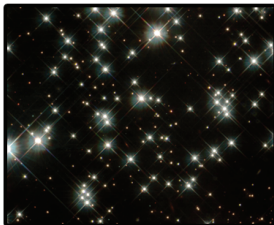
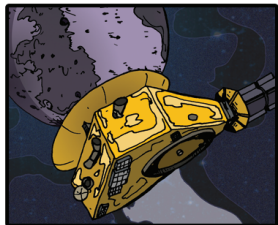
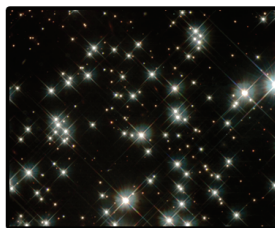
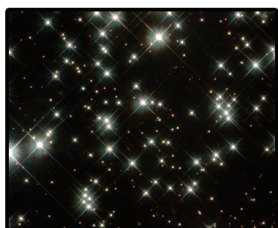
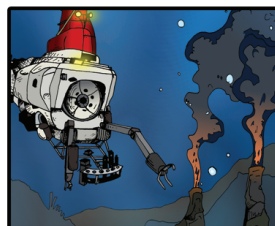
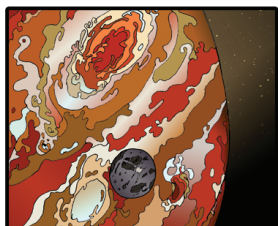
Layout

Jenny Mottar

Special thanks to Leslie Mullen and Daniella Scalice

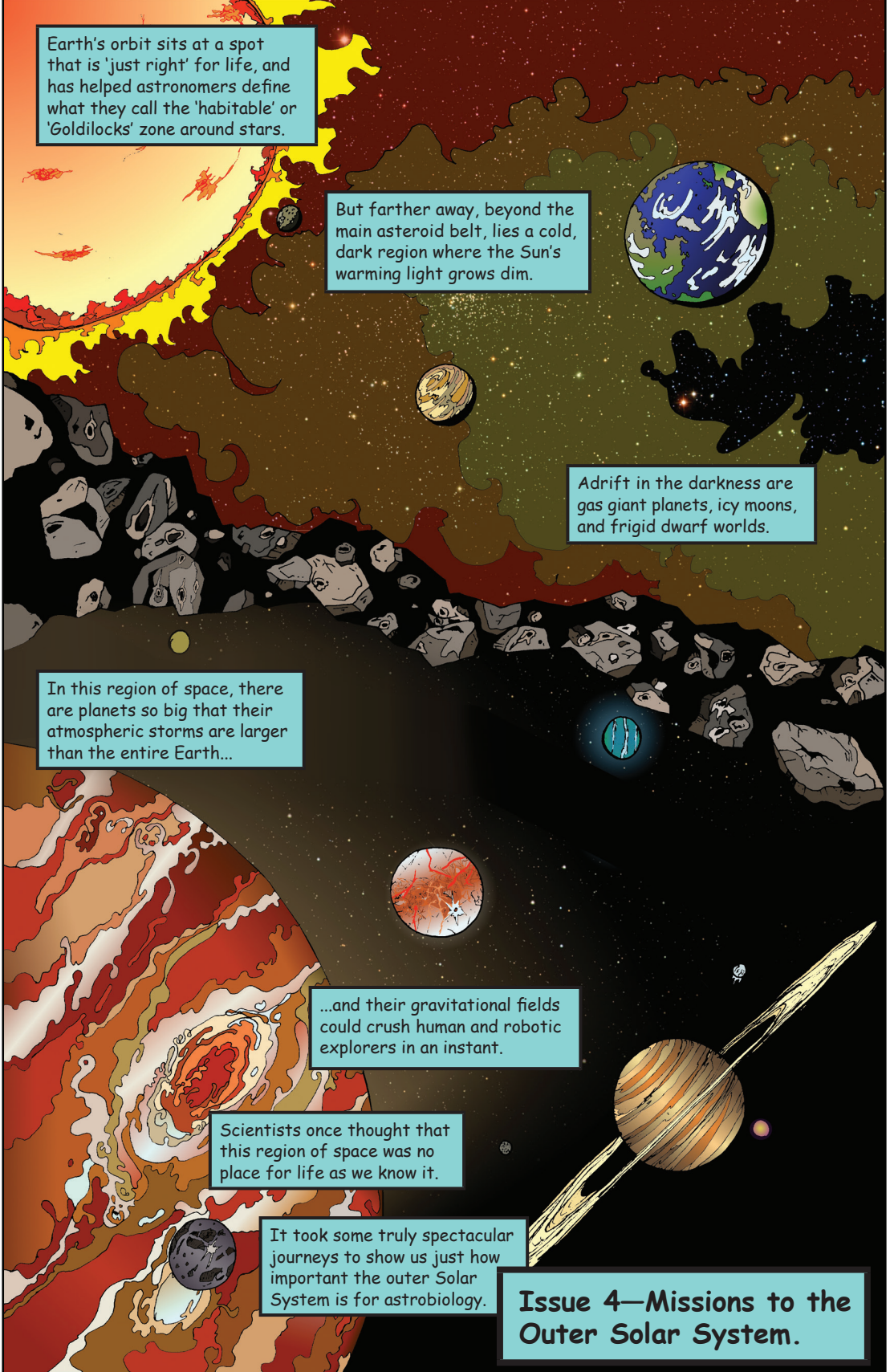
Issue #4

Missions to the Outer Solar System



The year 2010 marked the 50th anniversary of NASA's Exobiology Program, established in 1960 and expanded into a broader Astrobiology Program in the 1990s. To commemorate the past half century of research, we are telling the story of how this field developed and how the search for life elsewhere became a key component of NASA's science strategy for exploring space. This issue is the fourth in what we intend to be a series of graphic history books. Though not comprehensive, the series has been conceived to highlight key moments and key people in the field as it explains how Astrobiology came to be.

-Linda Billings, Editor



Earth's orbit sits at a spot that is 'just right' for life, and has helped astronomers define what they call the 'habitable' or 'Goldilocks' zone around stars.

But farther away, beyond the main asteroid belt, lies a cold, dark region where the Sun's warming light grows dim.

Adrift in the darkness are gas giant planets, icy moons, and frigid dwarf worlds.

In this region of space, there are planets so big that their atmospheric storms are larger than the entire Earth...

...and their gravitational fields could crush human and robotic explorers in an instant.

Scientists once thought that this region of space was no place for life as we know it.

It took some truly spectacular journeys to show us just how important the outer Solar System is for astrobiology.

Issue 4—Missions to the Outer Solar System.

The giant planets of the outer Solar System have fascinated humans for a long time. (1)



They are very far away, but Jupiter and Saturn are so giant that they shine brightly in the night sky.

When Galileo Galilei spotted Jupiter's moons,* it occurred to him that the Universe might not be centered on the Earth. (2)

Hmm...

By the time the space age dawned, scientists like Harold Urey* began to wonder what planetary moons were made of.

"...the Sun remains fixed in the centre of the circle of heavenly bodies, without changing its place..." (3)

"The interiors of objects of similar mass [to the Earth's moon]... must have risen above the melting point of ice in their interiors..."

"Hence the water of the Jovian moons must all be at or near their surfaces!"

"In fact, water flows, instead of terrestrial lava flows, may occur from time to time." (4)

To truly understand the outer Solar System, astrobiologists needed close-up views that only space missions could provide.

*see Issue #1

In 1965, NASA scientist Gary Flandro realized that the planets were in a rare position relative to one another—an event that only occurred every 175 years! (5,6)

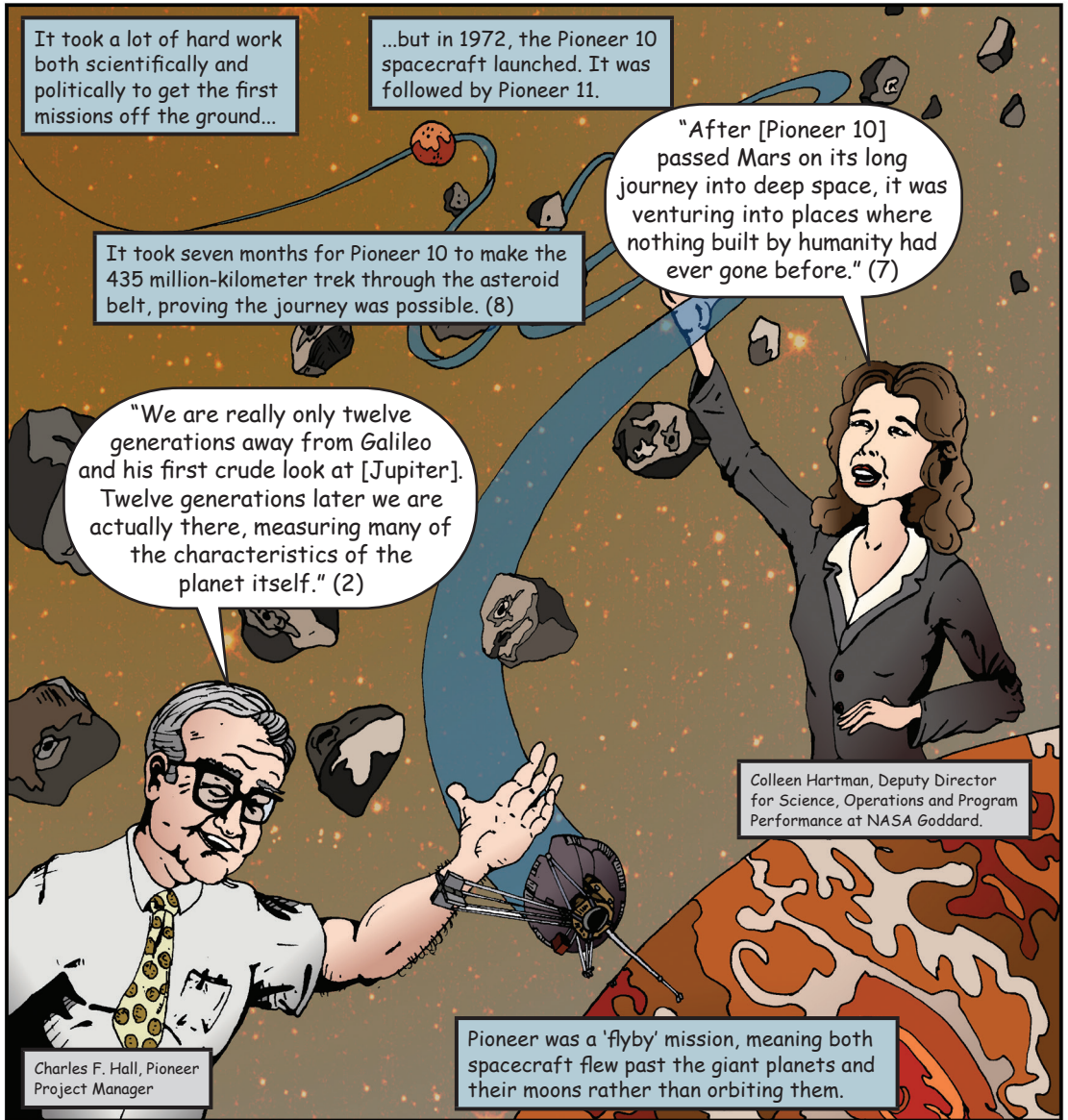
I have an idea.

What if we used Jupiter's powerful gravity as a slingshot?

A spacecraft could use the energy to visit all the giant planets in one 'Grand Tour!'



NASA was ready for a game of inter-planetary pinball!



It took a lot of hard work both scientifically and politically to get the first missions off the ground...

...but in 1972, the Pioneer 10 spacecraft launched. It was followed by Pioneer 11.

It took seven months for Pioneer 10 to make the 435 million-kilometer trek through the asteroid belt, proving the journey was possible. (8)

"After [Pioneer 10] passed Mars on its long journey into deep space, it was venturing into places where nothing built by humanity had ever gone before." (7)

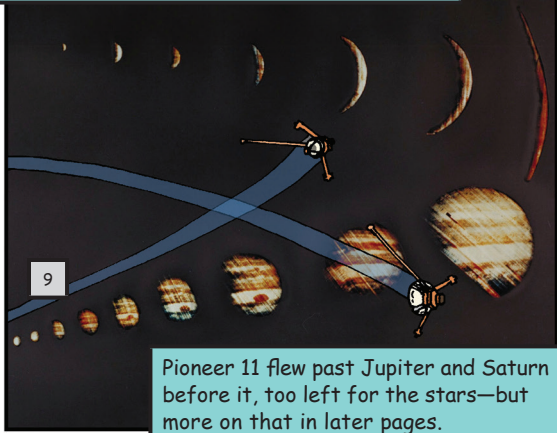
"We are really only twelve generations away from Galileo and his first crude look at [Jupiter]. Twelve generations later we are actually there, measuring many of the characteristics of the planet itself." (2)

Colleen Hartman, Deputy Director for Science, Operations and Program Performance at NASA Goddard.

Charles F. Hall, Pioneer Project Manager

Pioneer was a 'flyby' mission, meaning both spacecraft flew past the giant planets and their moons rather than orbiting them.

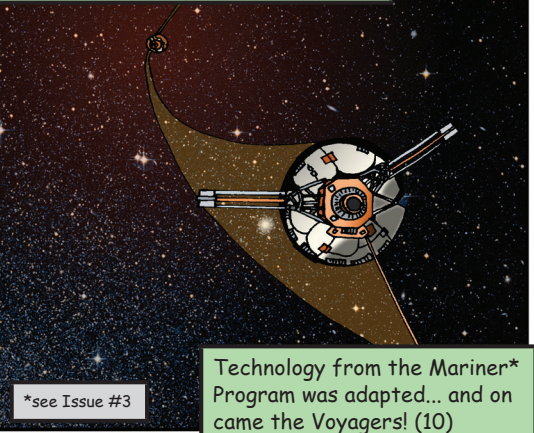
Pioneer 10 visited Jupiter and then flew out toward the edge of the Solar System.



9

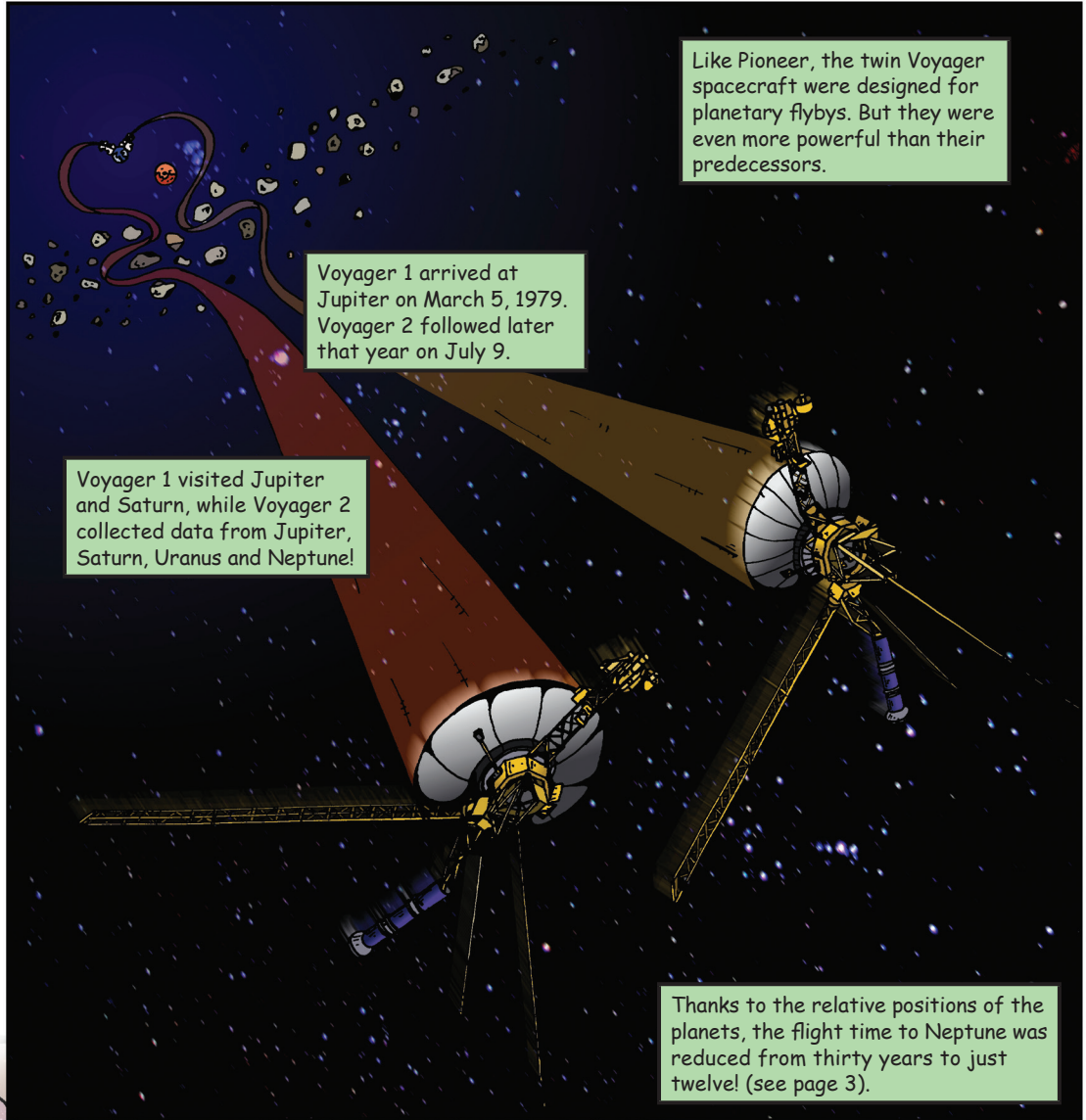
Pioneer 11 flew past Jupiter and Saturn before it, too left for the stars—but more on that in later pages.

With knowledge gained from Pioneer, NASA was ready for the next step.



*see Issue #3

Technology from the Mariner* Program was adapted... and on came the Voyagers! (10)

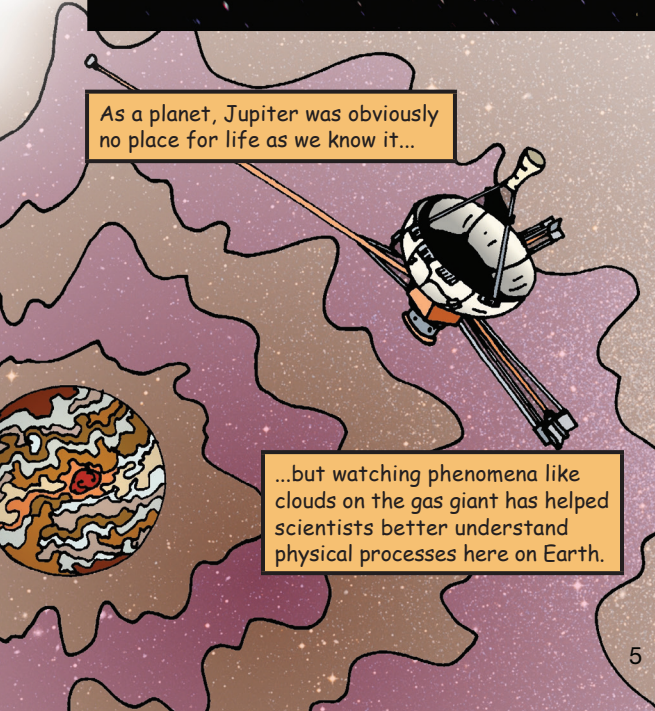


Like Pioneer, the twin Voyager spacecraft were designed for planetary flybys. But they were even more powerful than their predecessors.

Voyager 1 arrived at Jupiter on March 5, 1979. Voyager 2 followed later that year on July 9.

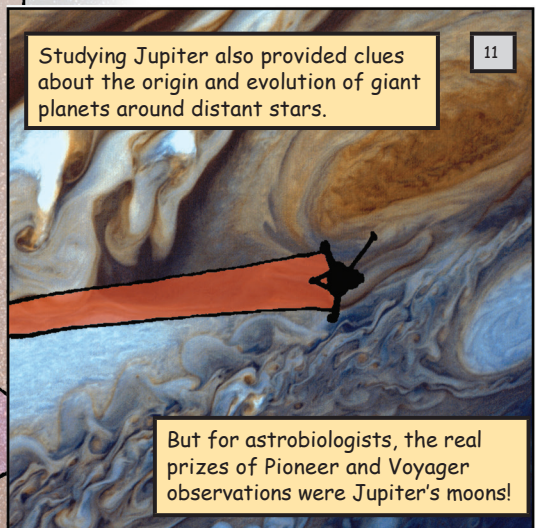
Voyager 1 visited Jupiter and Saturn, while Voyager 2 collected data from Jupiter, Saturn, Uranus and Neptune!

Thanks to the relative positions of the planets, the flight time to Neptune was reduced from thirty years to just twelve! (see page 3).



As a planet, Jupiter was obviously no place for life as we know it...

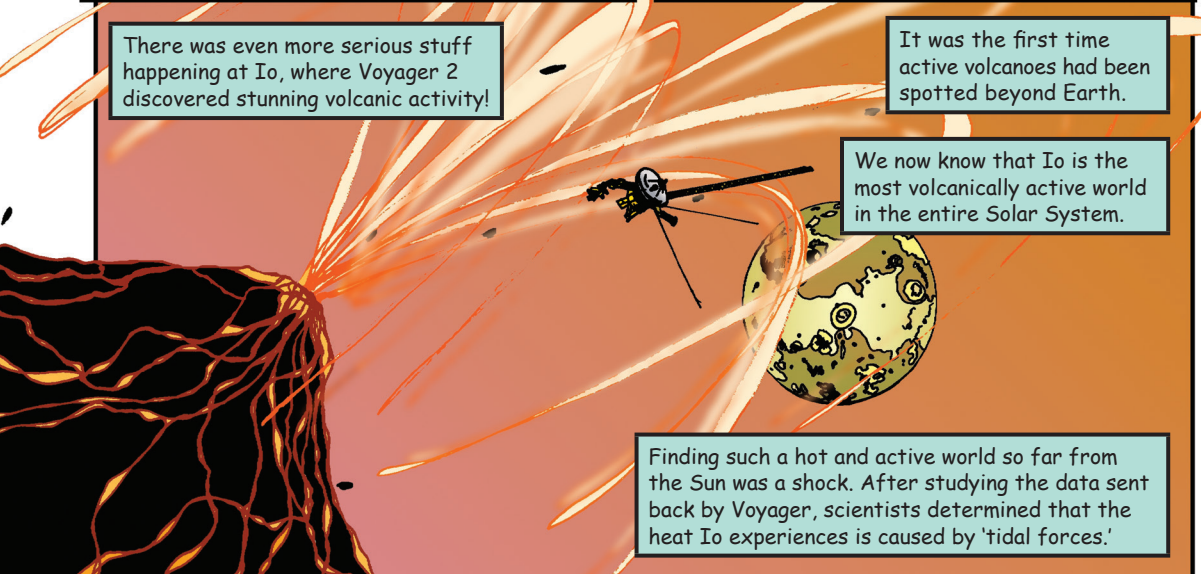
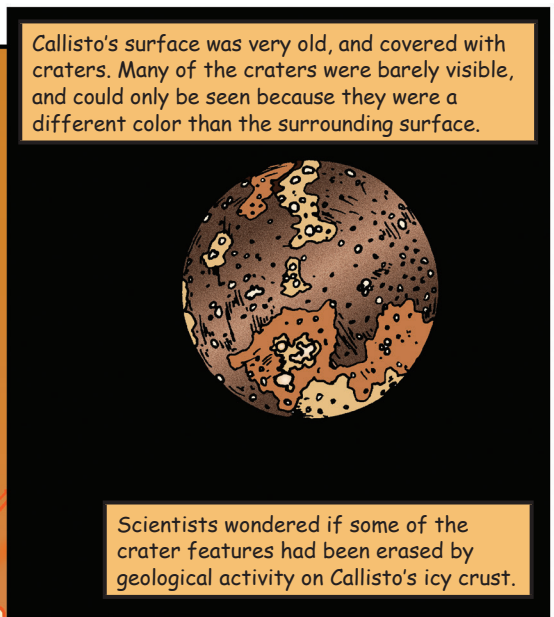
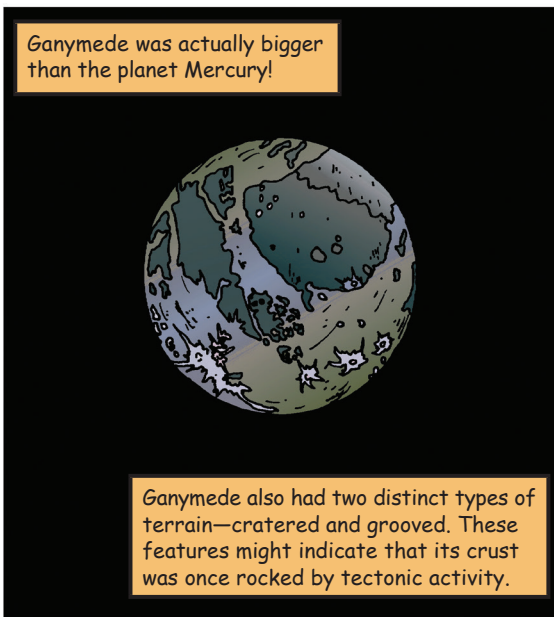
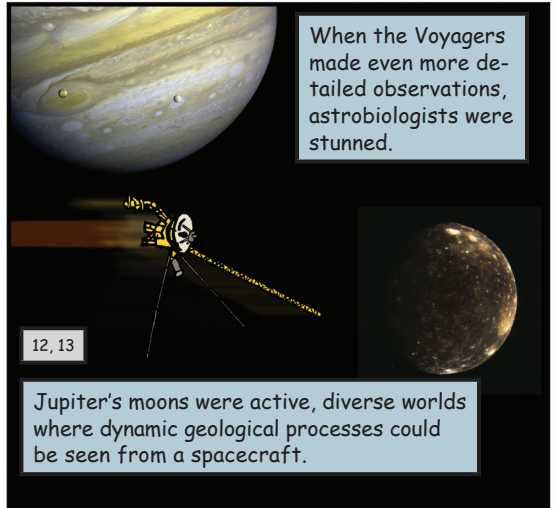
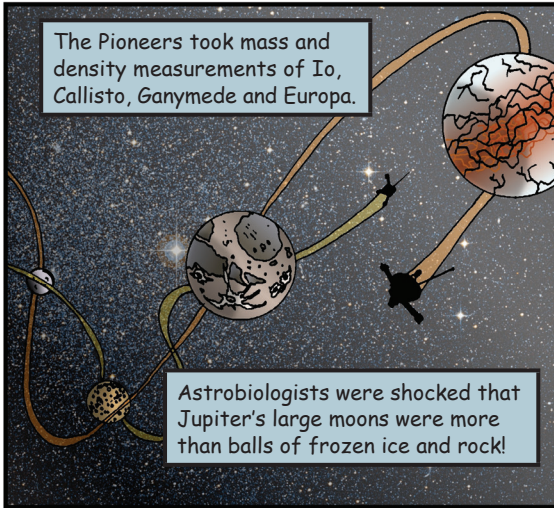
...but watching phenomena like clouds on the gas giant has helped scientists better understand physical processes here on Earth.

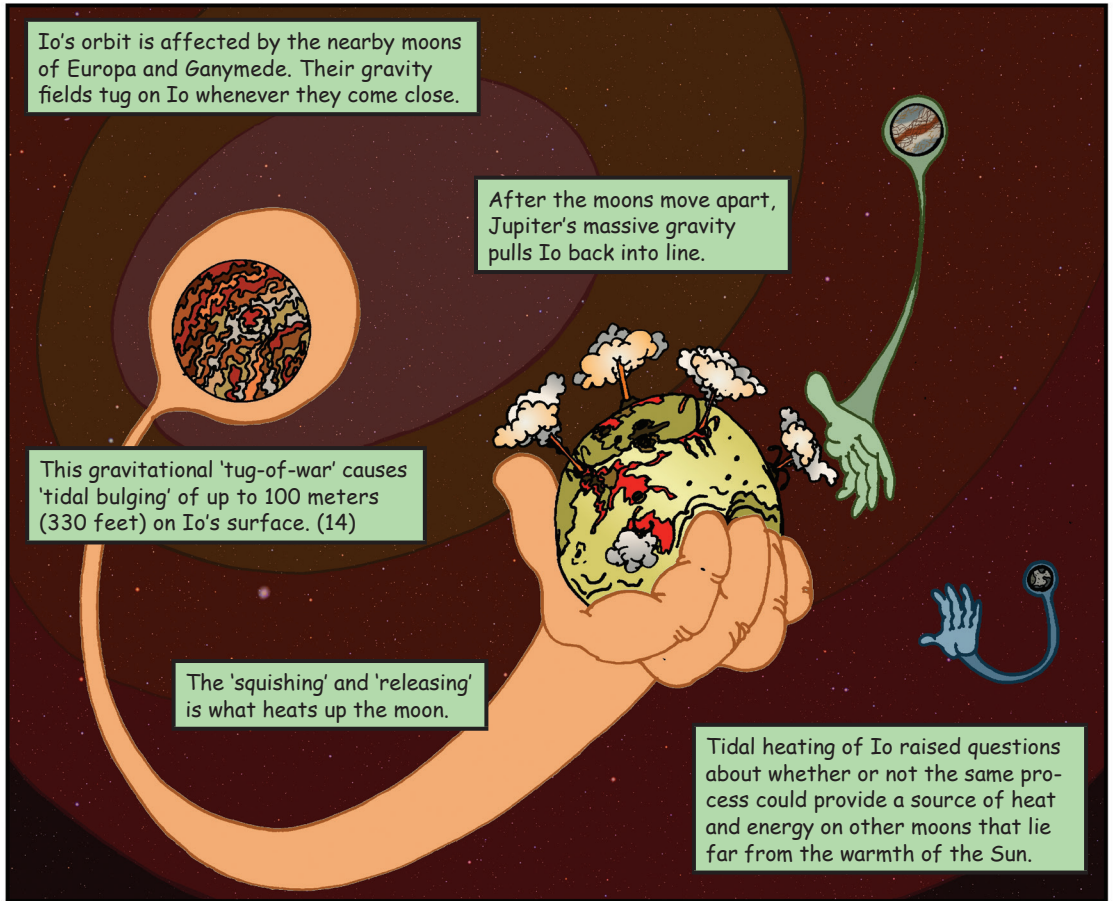


Studying Jupiter also provided clues about the origin and evolution of giant planets around distant stars.

11

But for astrobiologists, the real prizes of Pioneer and Voyager observations were Jupiter's moons!





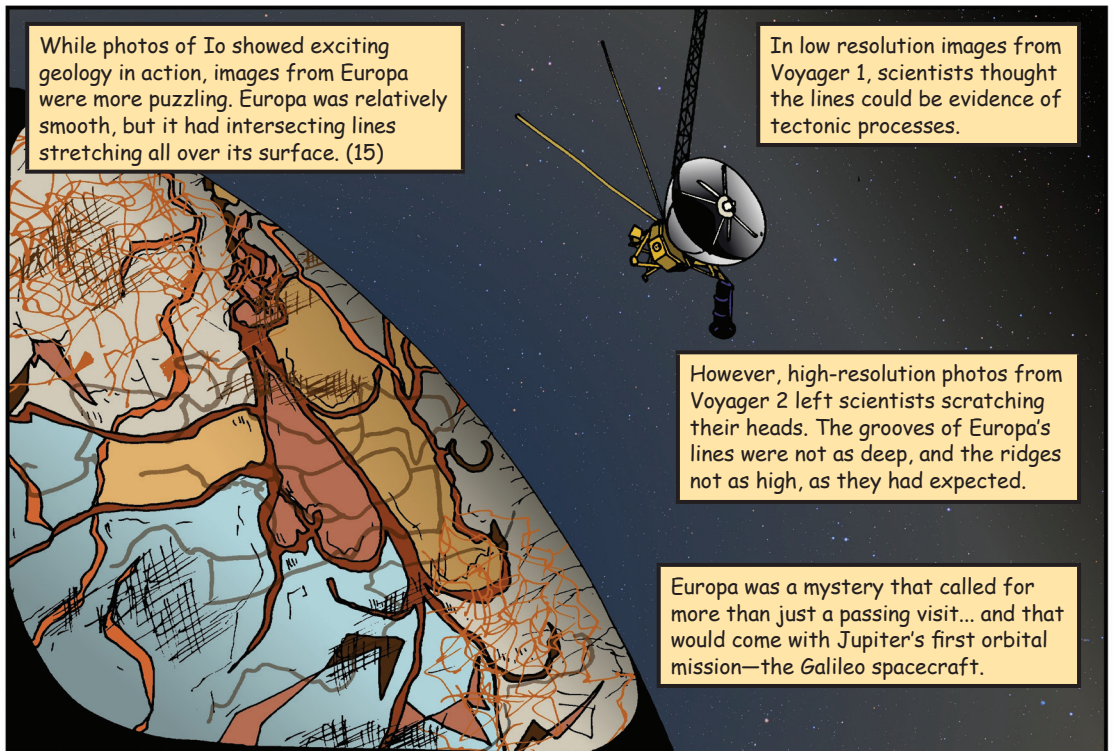
Io's orbit is affected by the nearby moons of Europa and Ganymede. Their gravity fields tug on Io whenever they come close.

After the moons move apart, Jupiter's massive gravity pulls Io back into line.

This gravitational 'tug-of-war' causes 'tidal bulging' of up to 100 meters (330 feet) on Io's surface. (14)

The 'squishing' and 'releasing' is what heats up the moon.

Tidal heating of Io raised questions about whether or not the same process could provide a source of heat and energy on other moons that lie far from the warmth of the Sun.



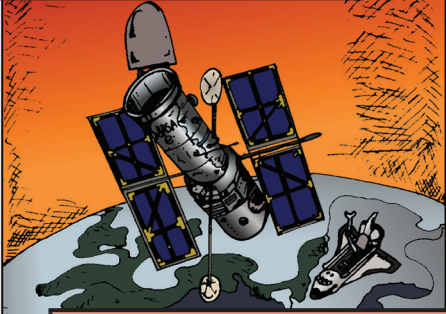
While photos of Io showed exciting geology in action, images from Europa were more puzzling. Europa was relatively smooth, but it had intersecting lines stretching all over its surface. (15)

In low resolution images from Voyager 1, scientists thought the lines could be evidence of tectonic processes.

However, high-resolution photos from Voyager 2 left scientists scratching their heads. The grooves of Europa's lines were not as deep, and the ridges not as high, as they had expected.

Europa was a mystery that called for more than just a passing visit... and that would come with Jupiter's first orbital mission—the Galileo spacecraft.

Political pressures almost stopped Galileo before it began. (8)



NASA had also approved the powerful Hubble Space Telescope...

...and taking on these two major programs was a huge strain on the budget. In 1981, Galileo was close to being cancelled.



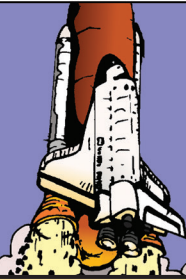
But the planetary science community made its voice heard, and, in the end, both missions were approved!

"Rarely have I ever seen such a successful lobbying campaign... It was masterfully done." (8)



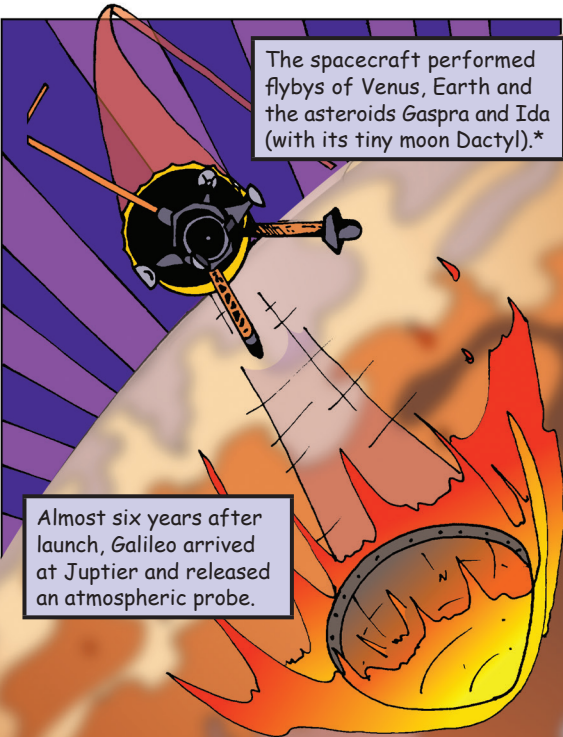
Dick Malow, former staff director of the House HUD-Independent Agencies Appropriations Subcommittee

Galileo left Earth in October 1989 aboard the newly minted Space Shuttle.*



Galileo started work early with two Earth flybys. It spotted a huge impact basin on the far side of the Moon and signs of ancient lunar volcanism.

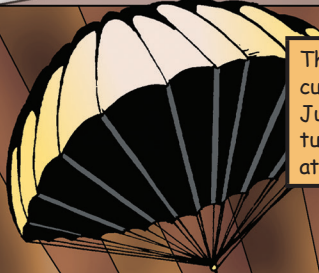
The spacecraft performed flybys of Venus, Earth and the asteroids Gaspra and Ida (with its tiny moon Dactyl!)*



Almost six years after launch, Galileo arrived at Jupiter and released an atmospheric probe.

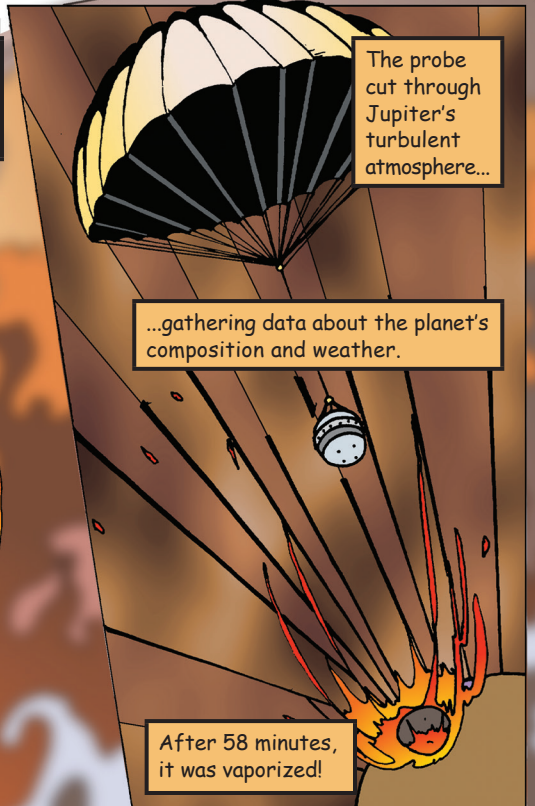
*see Issue #3

The probe cut through Jupiter's turbulent atmosphere...



...gathering data about the planet's composition and weather.

After 58 minutes, it was vaporized!



In July of 1994, Galileo witnessed something spectacular (and unexpected)...

The comet Shoemaker-Levy crashing into Jupiter!

"Galileo was positioned to see the actual impact on the backside and provide images and data concerning exactly the magnitude of those impacts." (16)



Jim Erickson, former Galileo project manager.

Galileo circled through the Jovian system and collected much more data than the Pioneers or Voyagers did on their passing visits.

For instance, Galileo measured Io's temperature and found volcanoes hotter than those on Earth!

But Galileo's real prize for astrobiologists was Europa. Images from the Voyagers were nothing compared to the spectacular world Galileo revealed.

Europa had few craters on its surface. This means that the ice is constantly changing, wiping away the evidence of impacts after they happen.

Although frozen solid, the surface of Europa had large 'ice rafts' the size of cities that appeared to have broken off and floated apart. Galileo also showed that Europa had a thin oxygen atmosphere and ionosphere. (18)

Astrobiologists traced the web of intersecting lines and fissures that covered Europa. They noted the nuances in their colors and the ways in which they reflected light.

Were the cracks fresh ice that was pushed to the surface from below?

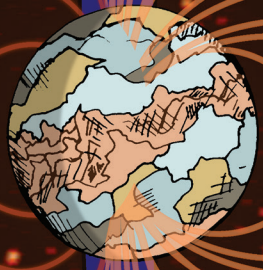
Careful examination of the patterns and shapes led scientists to theorize that the icy surface was just a shell resting above a liquid layer deeper down. (19)

Then, Galileo's magnetometer spotted strange directional changes in Europa's magnetic field...

"The direction that a magnetic compass on Europa would point to flips around in a way that's best explained by the presence of a layer of electrically conducting liquid, such as saltwater, beneath the ice."

"We have good reason to believe the surface layers of Europa are made up of water that is either frozen or liquid."

"But ice is not a good conductor, and therefore we infer that the conductor may be a liquid ocean." (20)

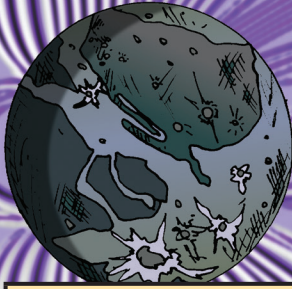


"It will be interesting to see whether this same type of phenomenon occurs at Jupiter's moon Ganymede." (21)



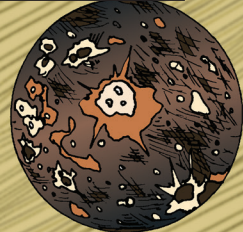
Margaret Kivelson, principal investigator for Galileo's magnetometer.

Galileo did discover a magnetic field at Ganymede.



...raising questions about what lay beneath the large moon's solid surface. (22)

Similarly, Galileo found a magnetic field at Callisto...



But any ocean on Callisto would have to be extremely deep, because there are large craters all over Callisto's surface.

While the Voyagers were busy putting Europa on the astrobiological map, scientists made a fantastic discovery back on Earth.

Researchers Tjeerd van Anel and Jack Corliss spent six hours exploring the seafloor at 9,000 feet below the Pacific near the Galapagos Islands. (23)

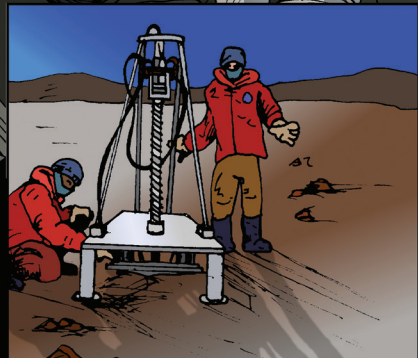
They returned to the surface with samples that stank like rotten eggs.

The smell of hydrogen sulfide led scientists to discover that the depths of Earth's oceans support more life than anyone expected—and some organisms thrived **without** light from the Sun.

We learned of new energy sources, like undersea volcanoes, that supported entire communities of life.*

Scientists began to explore environments on Earth that could be similar to a European ocean—from arctic islands to subsurface Antarctic lakes.

These findings raised many questions that changed our view of habitability and the origin and evolution of life.

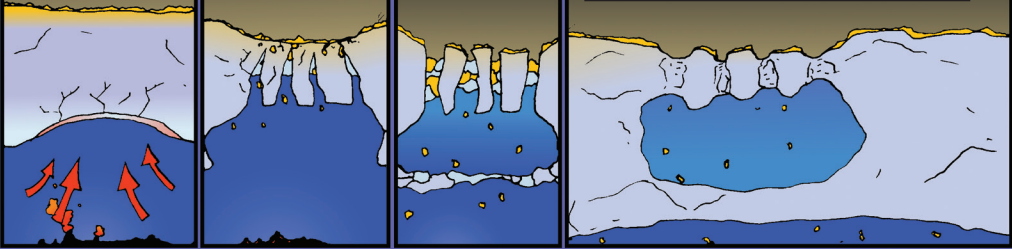


Engineers began developing instruments that could send future missions through the ice of Europa to explore its hidden depths.

*More on this in later issues

Decades after Galileo's launch, astrobiologists are still studying data from the mission and making new discoveries about Europa.

For instance, Earth scientists compared bumpy features on Europa (called chaos terrains) with similar features at Earth's poles. (24)



"One opinion in the scientific community has been if the ice shell is thick, that's bad for biology. That might mean the surface isn't communicating with the underlying ocean."

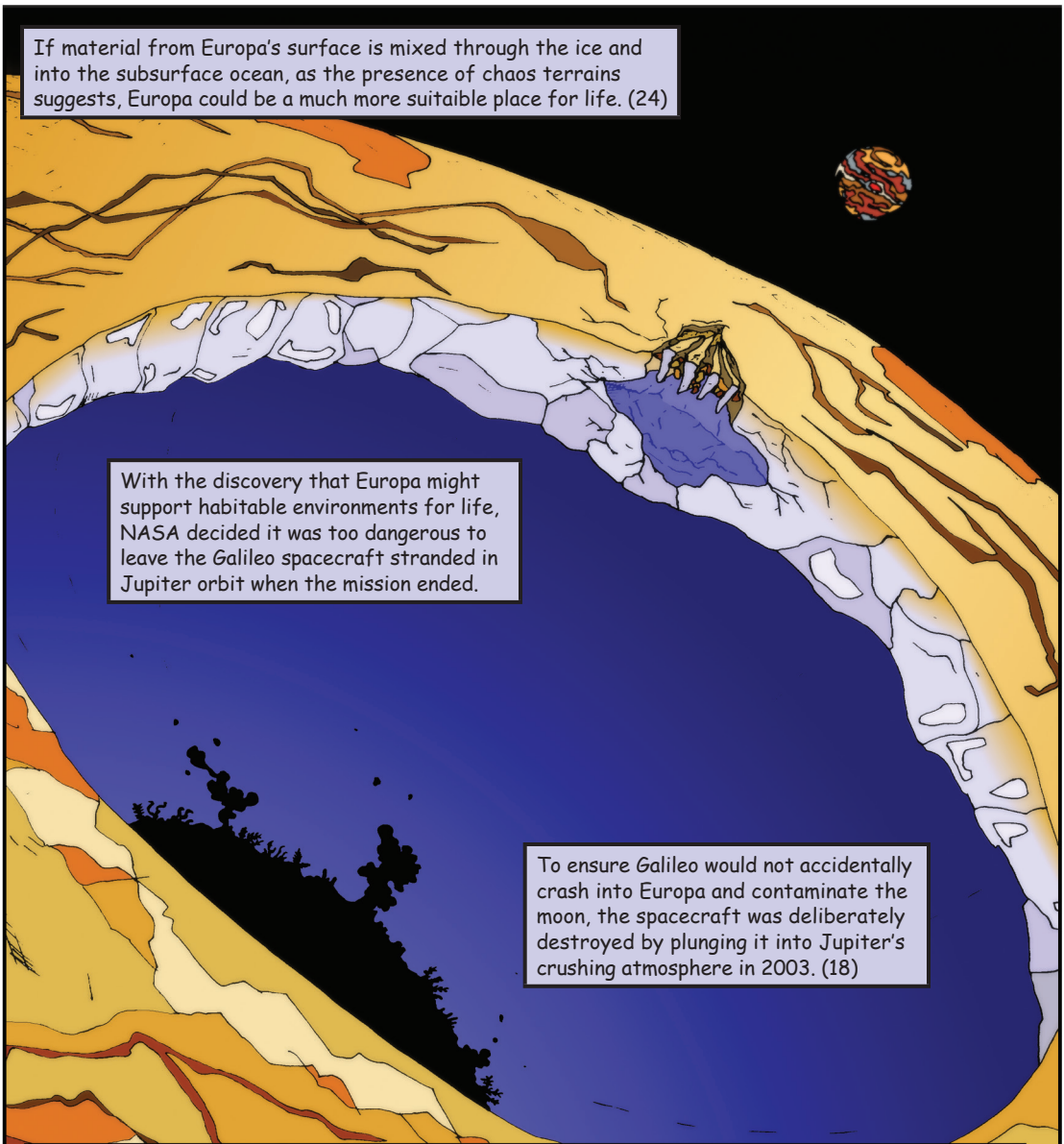
Based on what we know from Earth, these chaos terrains may indicate that lakes of water exist within the ice of Europa's shell.

Britney Schmidt,
Georgia Tech

Don Blankenship,
University of
Texas at Austin.

"Now, we see evidence that it's a thick ice shell that can mix vigorously and new evidence for giant shallow lakes. That could make Europa and its ocean more habitable." (25)


"This new understanding of processes on Europa would not have been possible without the foundation of the last 20 years of observations over Earth's ice sheets and floating ice shelves." (25)



If material from Europa's surface is mixed through the ice and into the subsurface ocean, as the presence of chaos terrains suggests, Europa could be a much more suitable place for life. (24)

With the discovery that Europa might support habitable environments for life, NASA decided it was too dangerous to leave the Galileo spacecraft stranded in Jupiter orbit when the mission ended.

To ensure Galileo would not accidentally crash into Europa and contaminate the moon, the spacecraft was deliberately destroyed by plunging it into Jupiter's crushing atmosphere in 2003. (18)

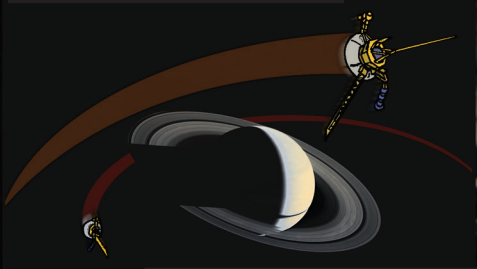


Galileo's fiery end completed humankind's explorations at Jupiter for a time.

But there were more surprises waiting at humankind's next stop in the Solar System... Saturn.

Pioneer 11 and the two Voyager spacecraft made passing visits of the splendid, ringed giant.

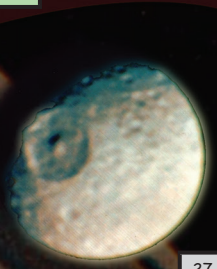
26



These flybys provided data about the planet, its rings and many of its bizarre moons.

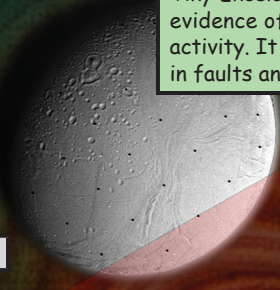
Mimas had a crater so huge that scientists thought the impact must have almost broken the moon apart!

27



Tiny Enceladus showed evidence of tectonic activity. It was covered in faults and valleys.

28

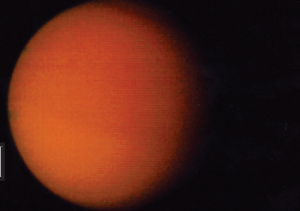


And then there was Titan...

29

Although bigger than Mercury, Titan wasn't as big as astronomers expected.

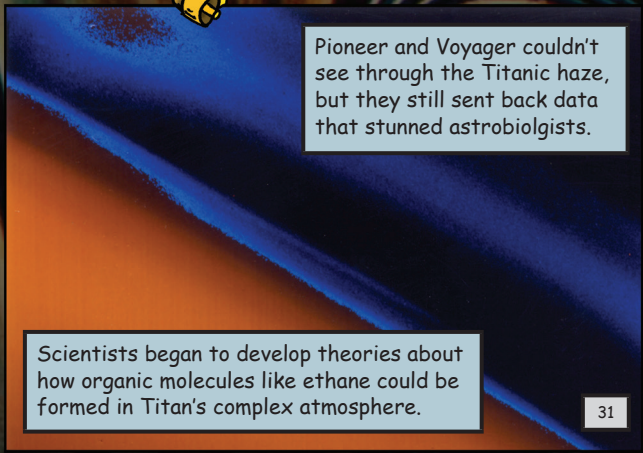
30



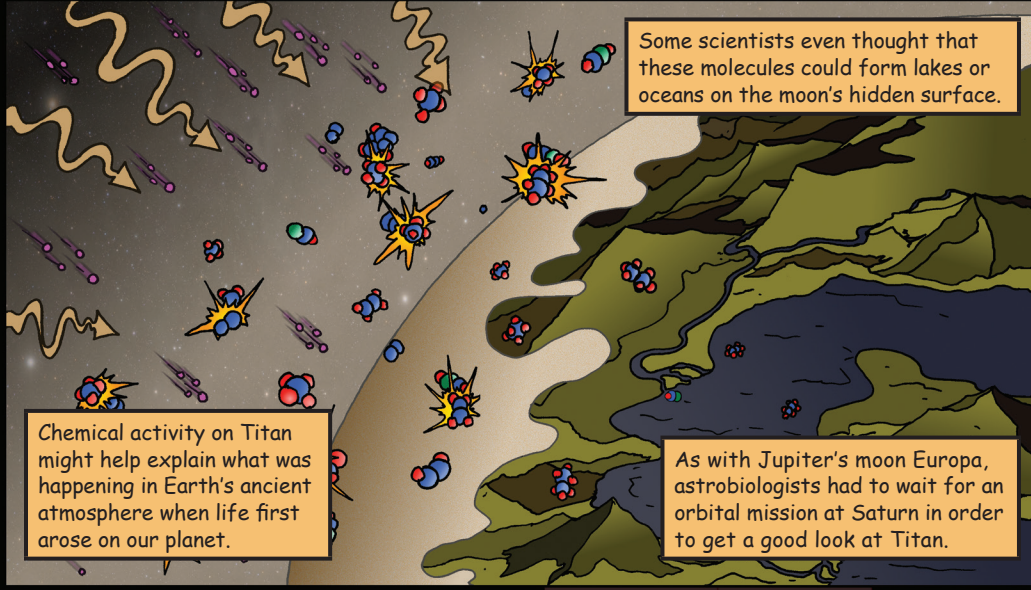
It turned out that the moon's thick atmosphere made it look bigger than it actually was.

Pioneer and Voyager couldn't see through the Titanic haze, but they still sent back data that stunned astrobiologists.

31



Scientists began to develop theories about how organic molecules like ethane could be formed in Titan's complex atmosphere.



Some scientists even thought that these molecules could form lakes or oceans on the moon's hidden surface.

Chemical activity on Titan might help explain what was happening in Earth's ancient atmosphere when life first arose on our planet.

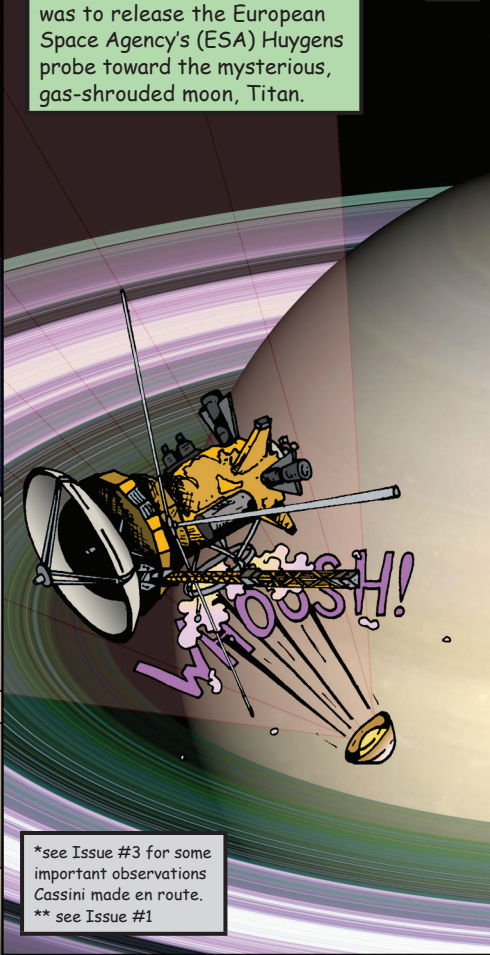
As with Jupiter's moon Europa, astrobiologists had to wait for an orbital mission at Saturn in order to get a good look at Titan.

That chance came with the international Cassini-Huygens mission. Cassini launched in 1997 and arrived at Saturn in 2004.*

Cassini's first order of business was to release the European Space Agency's (ESA) Huygens probe toward the mysterious, gas-shrouded moon, Titan.



The mission was named for two 17th century scientists that made important observations of Saturn in the early days of astronomy.**



*see Issue #3 for some important observations Cassini made en route.
** see Issue #1

Nobody knew what Huygens would see on its dramatic descent!

As the probe transmitted data from its six instruments, people on Earth held their breath.

Huygens captured spectacular images, showing that Titan had some remarkably Earth-like features, such as lakes and drainage canals.

There were unambiguous signs of features carved by flowing liquid. (33)

Scientists had no idea what would happen when Huygens reached the surface. Some theories suggested it would splash into an ocean of methane!

34

35

In fact, Huygens images gave us a birds-eye view of what appeared to be a dark, hydrocarbon lake.

When Huygens became the first explorer to land on a world of the outer Solar System, it touched down on a soft, but solid surface. (36)

Titan is so cold that the landing site had chunks of water ice instead of rocks. (37)

As Huygens warmed the soil, it detected bursts of methane gas. (38)

39

"I am so shocked!"

"I really didn't expect the images to be so easily interpretable."

"I thought we'd see patterns... and I thought they'd still be mysterious to us."

Carolyn Porco, Cassini Imaging Team Lead.

"But the images that we've seen... one of them is clearly a drainage pattern." (40)

Every time Cassini passes Titan on its journey around the Saturn system, new details about the moon are revealed.

Cassini has spotted features like lakes, dunes, mountains and dramatic storms that make Titan seem almost 'Earth-like.'

As with Venus, Titan's environment can be used to study our own planet, Earth, through the science of comparative planetology.*

Instead of water, Titan's lakes and seas are filled with a liquid mixture of 'hydrocarbons'—carbon-based molecules like ethane and methane!

Astrobiologists are still studying what liquid hydrocarbons on Titan could mean for life's prospects on the surface...

On Earth, methane is usually found as a gas—but it's so cold on Titan that methane rains down as a liquid.

...but the moon could also have other habitats for life.

By watching how Titan is squeezed by the gravity of Saturn, Cassini may have found evidence that Titan harbors a subsurface ocean of liquid water. (42)

"The tides on Titan pulled up by Saturn aren't huge compared to the pull the biggest planet, Jupiter, has on some of its moons."

"Cassini's detection of large tides on Titan leads to the almost inescapable conclusion that there is a hidden ocean at depth." (43)

"But, short of being able to drill on Titan's surface, the gravity measurements provide the best data we have of Titan's internal structure." (43)

Sami Asmar, Cassini team member, NASA JPL

Luciano Iess, Cassini team member, University of Rome

*see Issue 3

Cassini has returned spectacular data from other locations as well. Saturn's rings have never been seen in such detail.

And dozens of Saturn's bizarre and numerous moons had their moment in front of Cassini's lens.

Tiny Enceladus captured the attention of astrobiologists when Cassini witnessed icy plumes erupting from the moon.

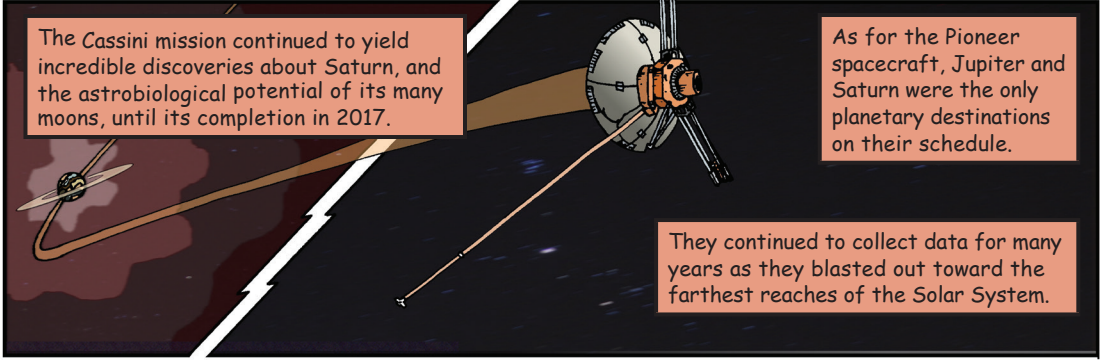
It was definitive evidence that Enceladus was geologically active.

"For planetary explorers like us, there is little that can compare to the sighting of activity on another solar system body. This has been a heart-stopper, and surely one of our most thrilling results." (44)

Cassini found evidence that the plumes contain saltwater and organic chemicals. Could Enceladus also be hiding a subsurface ocean? And could that ocean be a habitat for life? (45)

Carolyn Porco, Cassini Imaging Team Lead.

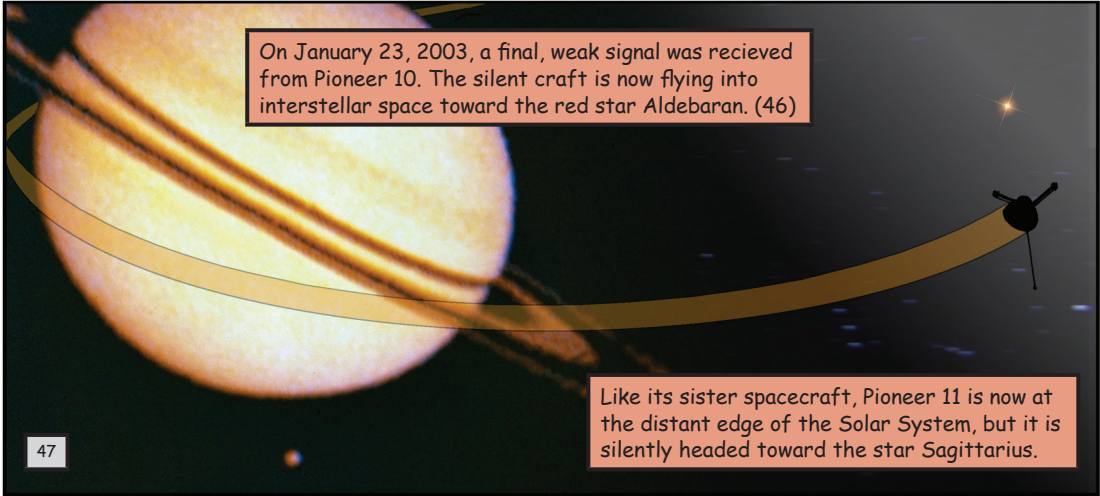
Cassini has continued to study Enceladus' plumes and their effects as they spray material all over the Saturn system.



The Cassini mission continued to yield incredible discoveries about Saturn, and the astrobiological potential of its many moons, until its completion in 2017.

As for the Pioneer spacecraft, Jupiter and Saturn were the only planetary destinations on their schedule.

They continued to collect data for many years as they blasted out toward the farthest reaches of the Solar System.



On January 23, 2003, a final, weak signal was received from Pioneer 10. The silent craft is now flying into interstellar space toward the red star Aldebaran. (46)

Like its sister spacecraft, Pioneer 11 is now at the distant edge of the Solar System, but it is silently headed toward the star Sagittarius.

47

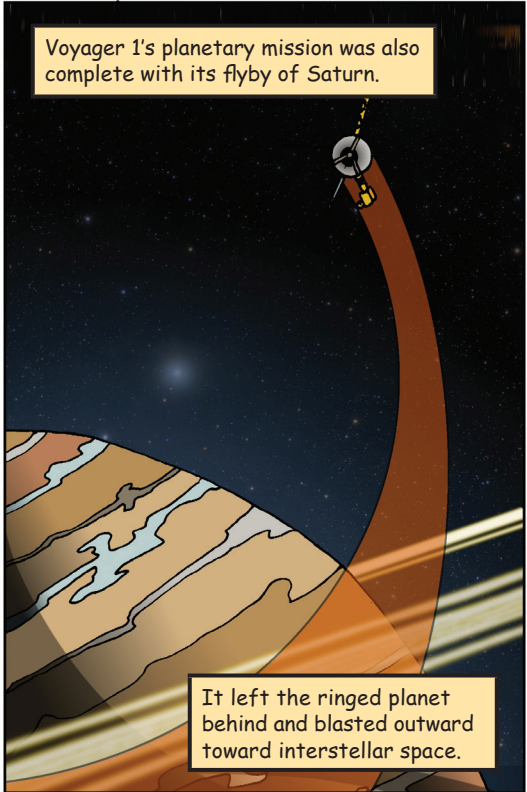


"Originally designed for a 21- month mission, Pioneer 10 lasted more than 30 years... I guess you could say we got our money's worth." (7)

"We can say that we sent Pioneer 10 off to tweak a dragon's tail, and it did that and more. It gave it a really good yank and... it survived." (2)

Robert Kraemer, NASA HQ

Larry Lasher, Pioneer Project Manager



Voyager 1's planetary mission was also complete with its flyby of Saturn.

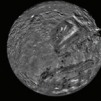
It left the ringed planet behind and blasted outward toward interstellar space.

Voyager 2, however, had more work to do.

While Voyager 1 rocketed away, Voyager 2 continued to Uranus and Neptune and completed the original 'Grand Tour' of the planets proposed in the 1960s (see page 3).



48



49

Uranus and Neptune can be seen by telescopes on Earth, but scientists didn't know what to expect when Voyager 2 arrived.

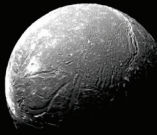


50

Uranus itself appeared to be fairly inactive, with little variation in its layers of clouds.

But Voyager 2 discovered 10 new moons and 2 new rings around the planet. (14)

51



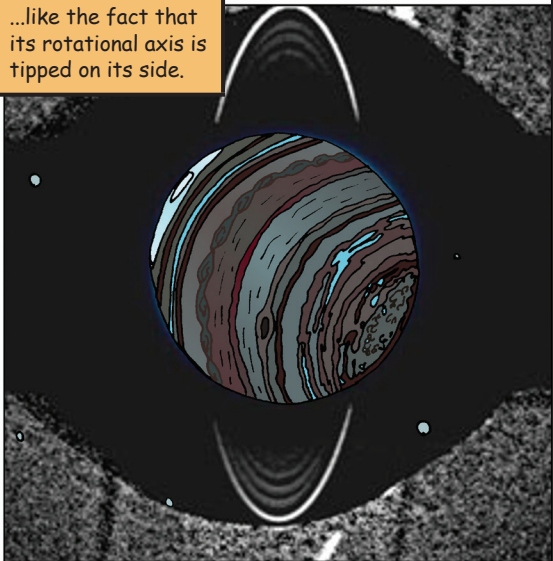
Uranus' five largest moons showed complex surfaces that indicated past geological activity.



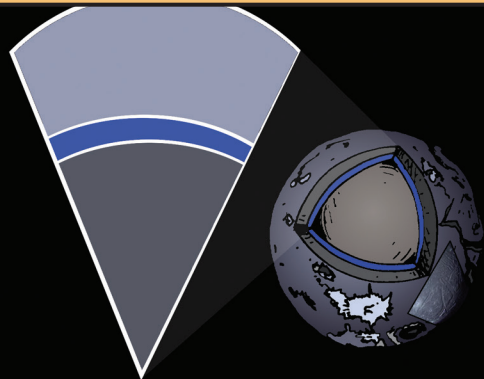
52

Uranus may have looked boring at first, but it actually has some pretty strange features...

...like the fact that its rotational axis is tipped on its side.

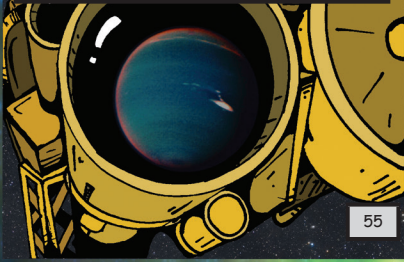


Telescopes on Earth have revealed clouds and huge wind storms, proving that Uranus is more dynamic than it first looked in Voyager images. (53)



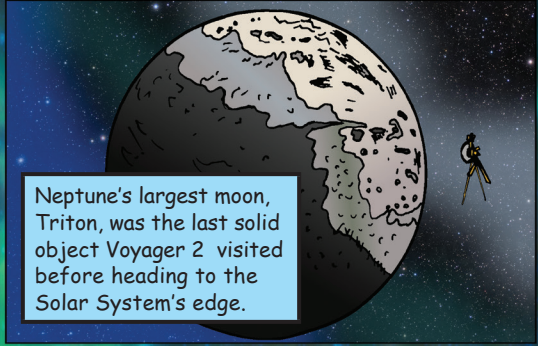
Some studies even suggest that moons of Uranus, like Titania, might have subsurface oceans. (54)

In the summer of 1989, Voyager 2 made it to Neptune. (14)



55

Neptune's largest moon, Triton, was the last solid object Voyager 2 visited before heading to the Solar System's edge.



Uranus and Neptune provide important information about the different types of planets that exist in the Universe.

"Uranus is a type of a planet that we know very little about. Thirty years ago we thought Uranus and Neptune were just smaller versions of Jupiter and Saturn." (54)

Scientists now know that they are 'ice giants,' a class of planet that might be the most common around stars other than our sun. (54)

"We'd like to study our local examples of this common type of planet." (54)

Mark Hofstadter, planetary scientist, NASA JPL

Many scientists have called for new missions to these mysterious giants.

"When Voyager flew by Uranus in 1986, it was dead. There were maybe 10 clouds."

Heidi Hammel, planetary astronomer, Association of Universities for Research in Astronomy.

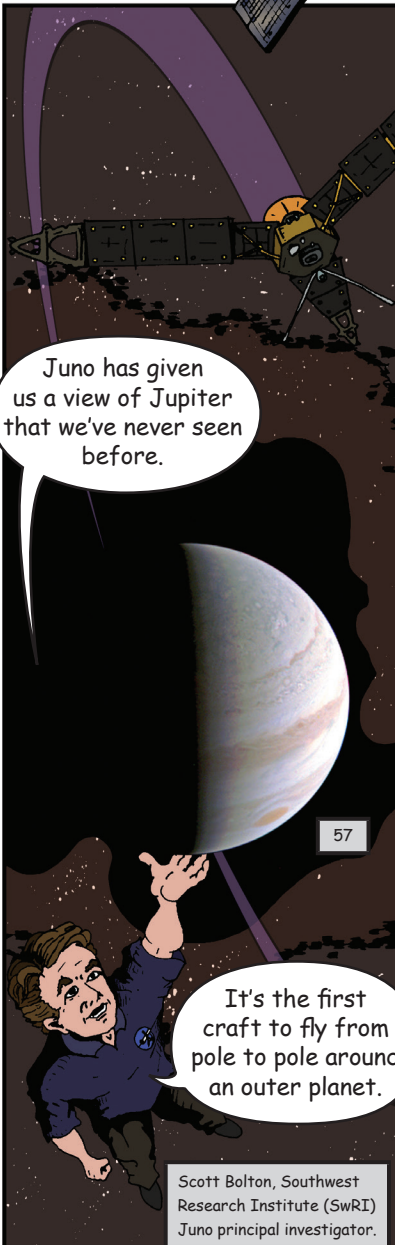
"Well, that's not what it's like right now. It's in a completely different season. The atmosphere's turning on. There's dark clouds and there's bright spots and there's all kinds of activity on this planet." (56)

But with no new missions planned, Uranus and Neptune are keeping their secrets for now.

With Voyager 2, all of the major planets in the Solar System have been visited.

Jupiter and Saturn have even been orbited by spacecraft.

On July 4, 2016, Jupiter welcomed a new, dedicated mission, named Juno.

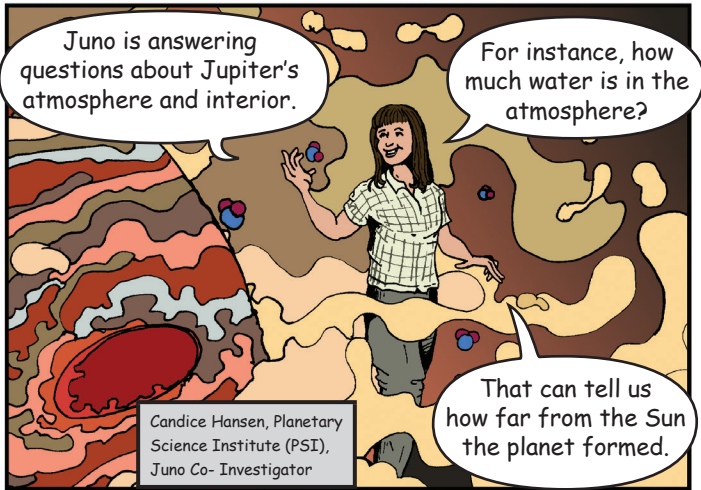


Juno has given us a view of Jupiter that we've never seen before.

57

It's the first craft to fly from pole to pole around an outer planet.

Scott Bolton, Southwest Research Institute (SwRI)
Juno principal investigator.



Juno is answering questions about Jupiter's atmosphere and interior.

For instance, how much water is in the atmosphere?

That can tell us how far from the Sun the planet formed.

Candice Hansen, Planetary Science Institute (PSI),
Juno Co-Investigator



We want to know how the Solar System formed, and Jupiter can help tell us.

After all, understanding formation is the first step in figuring out how our system became habitable.

In that sense, Juno could provide context for astrobiology studies in the Solar System and beyond.

Jonathan Lunine, Cornell University,
Juno Co-Investigator

Fran Bagenal, Univ. of Colorado, Juno Co-Investigator

Beyond the major planets, many hidden corners of the outer Solar System remain unexplored...



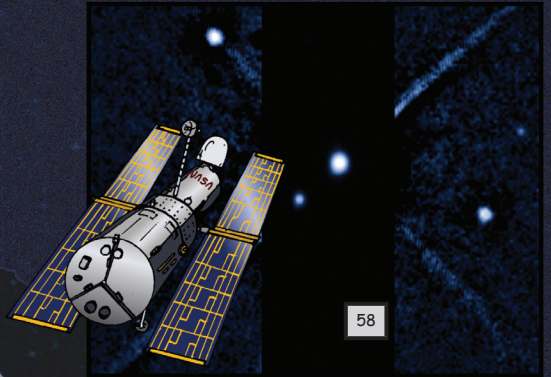
...but NASA's New Horizons mission is helping to change that.

In 2006, New Horizons launched toward small, distant Pluto, which is classified as a 'dwarf planet.'

Before New Horizons, we knew little about Pluto and its five small moons.



Even the highest-resolution images from ground-based and orbital telescopes see these tiny, distant objects as little more than points of light.

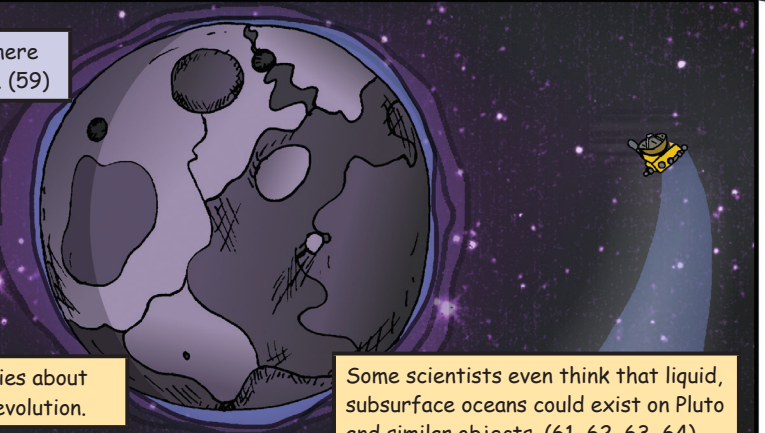


Pluto does have an atmosphere that is escaping into space. (59)

However, the atmospheric escape was slower than scientists had expected before the mission. (60)

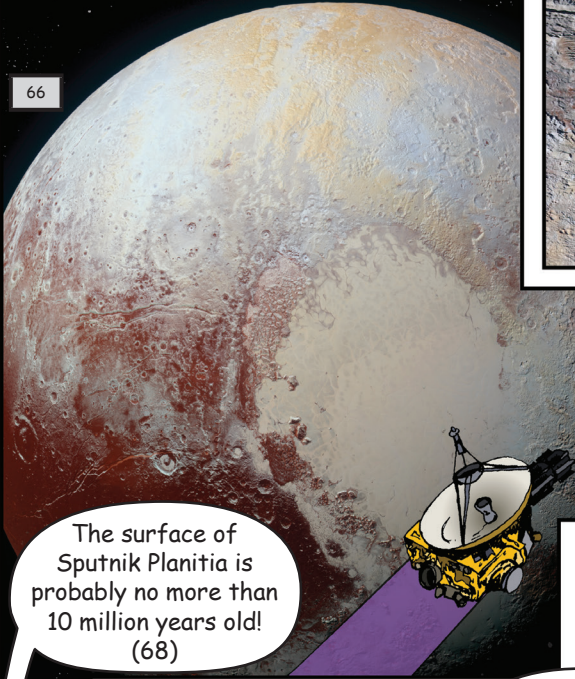
There are many theories about Pluto's structure and evolution.

Some scientists even think that liquid, subsurface oceans could exist on Pluto and similar objects. (61, 62, 63, 64)



New Horizons returned spectacular images of the Pluto system. These first-ever closeups held many surprises. (65)

66



The surface of Sputnik Planitia is probably no more than 10 million years old! (68)

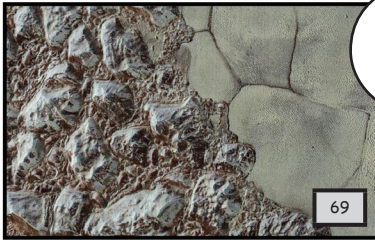
The composition of Pluto's surface is frozen, but surprisingly complex.

67



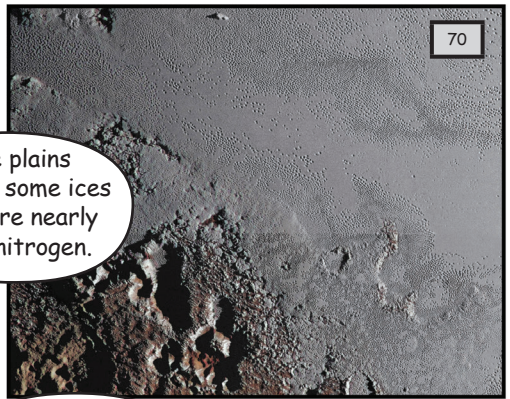
Crater counts showed that Pluto has been geologically active for the past 4 billion years!

A huge ice plain larger than Texas, informally dubbed Sputnik Planitia, has no craters. This means it is geologically young.



69

The plains contain some ices that are nearly pure nitrogen.



70

There are also Methane- and water-rich areas on Pluto.

And reddish-brown areas that might be tholins! (71)

The surface variations are a real surprise.

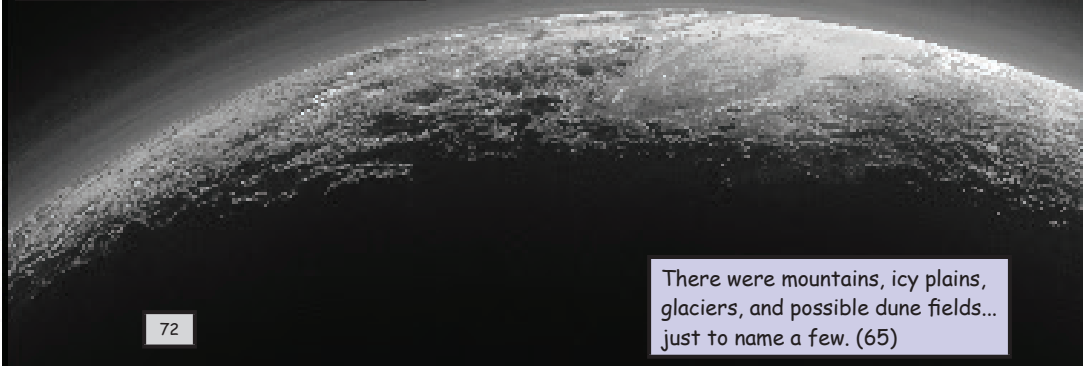
Pluto is truly unlike anywhere else in the Solar System.

Alan Stern, SwRI, New Horizons Principal Investigator

Leslie Young, SwRI, Deputy Project Scientist

Cathy Olkin, SwRI, Deputy Project Scientist

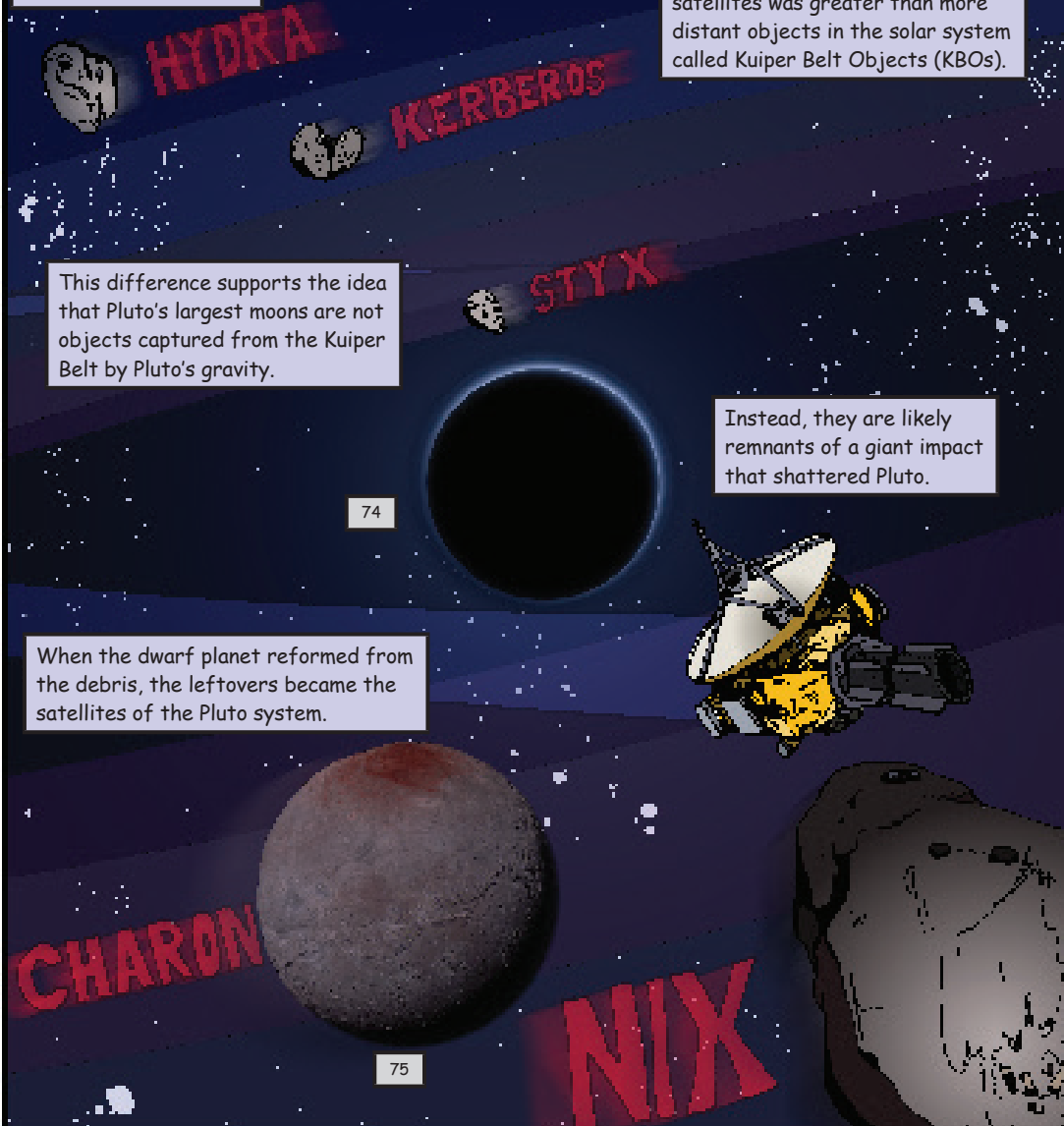
Beautiful images from New Horizons showed that Pluto's surface is covered with amazing geological features.



72

There were mountains, icy plains, glaciers, and possible dune fields... just to name a few. (65)

Even Pluto's moons had things to teach us. (73)



The brightness of Pluto's small satellites was greater than more distant objects in the solar system called Kuiper Belt Objects (KBOs).

This difference supports the idea that Pluto's largest moons are not objects captured from the Kuiper Belt by Pluto's gravity.

74

Instead, they are likely remnants of a giant impact that shattered Pluto.

When the dwarf planet reformed from the debris, the leftovers became the satellites of the Pluto system.

75

After Pluto, New Horizons turned to look at the Kuiper Belt, where the craft made observations of a number of KBOs.

The Kuiper Belt is thought to be a ring of material inhabited by 'ice dwarfs.' These planetary embryos never became planets...

...but they can teach us about how our solar system formed and evolved. (76)

In 2019, New Horizons will reach the object 2014 MU69, another example of an early building block of the Solar System.

Objects in the Solar System's outer reaches are not just balls of rock and ice. They actually appear in a range of colors - red, blue and white.

The dark colors are caused by radiation blasting their surfaces.

Pluto has shown us that some KBOs can be active.

For instance, white KBOs might have fresh material erupting from layers below the surface. (77)

Out beyond the Kuiper Belt is thought to be a mysterious region of dust and debris known as the Oort Cloud.*

* Possibly 10 to 10,000 times as far!

This distant region may be a source of comets and other objects...

...which can occasionally come crashing into the inner Solar System and impact worlds like Earth.

As robotic explorers traversed the planets of the outer Solar System, they also pointed their cameras back toward home.

"Look again at that dot. That's here. That's home. That's us."

Carl Sagan

Voyager 1 was the first to photograph Earth as a 'pale blue dot,' and showed astrobiologists exactly what an inhabited planet looks like from a distance of 6.4 billion kilometers (78).

"On it everyone you love, everyone you know... every human being who ever was... the history of our species lived there-on a mote of dust suspended in a sunbeam." (79)

The Voyagers gave us an outsider's perspective of Earth...

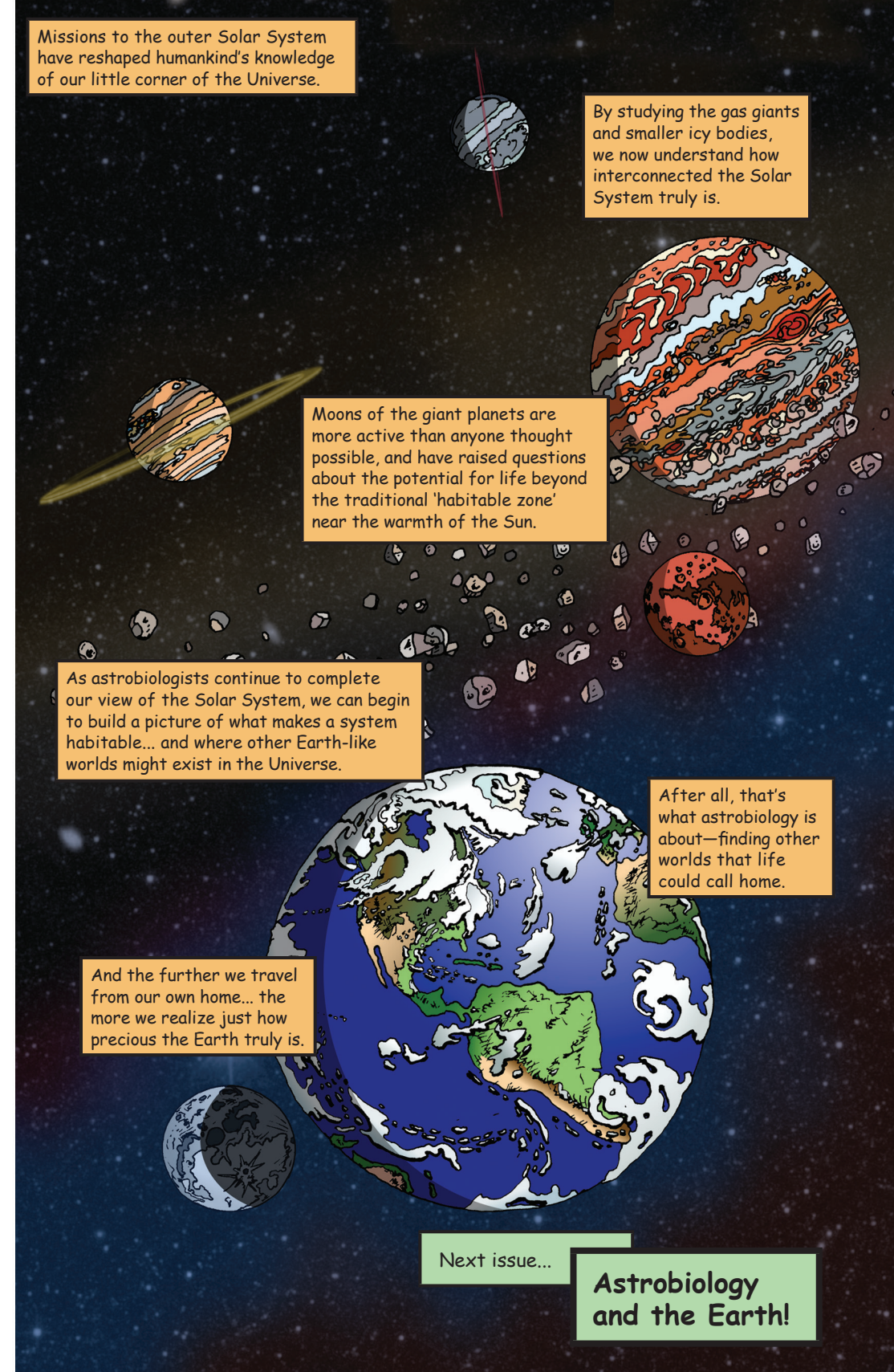
...and now they are about to do the same for our entire solar system.

More than three decades after launch, the Voyagers are still active. Voyager 1 is now the farthest-traveled object ever created by humankind.

In 2013, NASA announced that Voyager 1 had officially exited the Solar System and entered interstellar space. (80)

Together, the Voyagers are providing information about how our solar system evolved into the only known system capable of supporting life. This information can help astrobiologists spot similar systems around distant stars.

As they travel into the darkness beyond the influence of our sun... who knows what mysteries the Voyagers will uncover next!



Missions to the outer Solar System have reshaped humankind's knowledge of our little corner of the Universe.

By studying the gas giants and smaller icy bodies, we now understand how interconnected the Solar System truly is.

Moons of the giant planets are more active than anyone thought possible, and have raised questions about the potential for life beyond the traditional 'habitable zone' near the warmth of the Sun.

As astrobiologists continue to complete our view of the Solar System, we can begin to build a picture of what makes a system habitable... and where other Earth-like worlds might exist in the Universe.

After all, that's what astrobiology is about—finding other worlds that life could call home.

And the further we travel from our own home... the more we realize just how precious the Earth truly is.

Next issue...

Astrobiology and the Earth!

Astrobiology

A History of Exobiology and Astrobiology at NASA

Further Resources and References cited in this issue:

1. Morford and Lenardon. 2006. *Classical Mythology*. Oxford University Press, New York, New York.
2. Fimmel, R.O., Swindell, W., Burgess, E. 1977. *Pioneer Odyssey*. Prepared at Ames Research Center. National Aeronautics and Space Administration, Scientific and Technical Information Office, Washington, D.C.
3. Galilei, G. 1615. "Letter to Cristina di Lorena, Grand Duchess of Tuscany," Quoted in: Taylor, Sedley. 1873. "Galileo and Papal Infallibility," in *Macmillan's Magazine*: November 1873 to April 1874, Vol. 29, No. 93.
4. Pappalardo, R.T., McKinnon, W.B., Khurana, K. 2009. *Europa*. University of Arizona Press in collaboration with the Lunar and Planetary Institute, Tucson, Arizona. 729p.
5. Flandro, G.A. 1966. "Fast Reconnaissance Missions to the Outer Solar System Utilizing Energy Derived from the Gravitational Field of Jupiter," *Acta Astronautica* 12, 329-37.
6. Minovitch, M.A. 1963. *The Determination and Characteristics of Ballistic Interplanetary Trajectories under the Influence of Multiple Planetary Attractions*, Technical Report No. 32-464. NASA Jet Propulsion Laboratory (JPL), Pasadena, CA. October 31, 1963.
7. Mewhinney, M. 2003. "Pioneer 10 spacecraft sends last signal." NASA Ames Research Center, Moffett Field, CA. Release: 03-13AR. Available at http://www.nasa.gov/centers/ames/news/releases/2003/03_13AR.html
8. Meltzer, M. 2007. *Mission to Jupiter: A History of the Galileo Project*. National Aeronautics and Space Administration, NASA History Division, Washington, DC. 318p.
9. NASA Ames Research Center. *Pioneer Image Converter System (PICS) image of a crescent Jupiter gradually decreasing in size as the spacecraft sped away out of the Jovian system*. Image credit: NASA Ames.
10. Butrica, A.J. 1998. *Voyager: The Grand Tour of Big Science*. In: *From Engineering Science to Big Science: The NACA and NASA Collier Trophy Research Project Winners*. Mack, P.E. (editor). NASA History Series. National Aeronautics and Space Administration, NASA Office of Policy and Plans, NASA History Office, Washington, DC.
11. NASA JPL. 2005. *View of Jupiter taken by Voyager 1*. This image was taken through color filters and recombined to produce the color image. NASA JPL Photojournal. Available at <http://photojournal.jpl.nasa.gov>
12. NASA JPL. 1979. *Voyager 1 photo of Jupiter and its satellites Io (left) and Europa*. Io is about 350,000 kilometers (220,000 miles) above Jupiter's Great

- Red Spot; Europa is about 600,000 kilometers (375,000 miles) above Jupiter's clouds. NASA JPL Photojournal. Available at <http://photojournal.jpl.nasa.gov>
13. NASA. 1995. Voyager image of Jupiter's moon Callisto. NASA Astronomy Picture of the Day. Available at <http://apod.nasa.gov/>
 14. NASA JPL. 2013. Voyager: The Interstellar Mission. NASA Mission Page (Site Manager: Andrea Angrum). Available at <http://voyager.jpl.nasa.gov>
 15. Godwin, Robert and Steve Whitfield, Editors. 2005. Deep space: the NASA mission reports. National Aeronautics and Space Administration. University of Michigan. Apogee, 431p.
 16. Mullen, L. 2003. The End of Galileo. Astrobiology Magazine. Available at: www.astrobio.net
 17. NASA. 1994. Comet Shoemaker-Levy 9. Galileo Legacy Site. Available at <https://solarsystem.nasa.gov/galileo/gallery/comet-sl9.cfm>
 18. NASA. 2010. Galileo Legacy Site. Solar System Exploration. Available at <http://solarsystem.nasa.gov/galileo/index.cfm>
 19. Hoppa, G.V., Tufts, B.R., Greenberg, R., Geissler, P.E. 1999. "Formation of Cycloidal Features on Europa." Science, Vol. 285. 1899-1902.
 20. NASA JPL. 2000. Galileo evidence points to possible water world under Europa's icy crust. NASA JPL Media Relations Office. Available at <http://www.jpl.nasa.gov/news/news.php?feature=4895>
 21. NASA JPL. 2000. Galileo findings boost idea of other-worldly ocean. NASA JPL Media Relations Office. Available at <http://www.jpl.nasa.gov>
 22. NASA JPL. 2000. Evidence of ocean on Jupiter's moon Ganymede. Astrobiology Magazine. Available at: <http://www.astrobio.net>
 23. Fitzpatrick, G. (2013). Searching for Life Where the Sun Don't Shine (part 1): Explorations to the Sea Floors of Earth and Europa. Astrobiology Magazine. Available at <http://www.astrobio.net>
 24. Schmidt, B.E., Blankenship, D.D., Patterson, G.W., Schenk, P.M. 2011. Active formation of 'chaos terrain' over shallow subsurface water on Europa. Nature, 479(7373), 502-505.
 25. Brown, D., Airhart, M. 2011. NASA Probe Data Show Evidence of Liquid Water on Icy Europa. NASA. Available at http://www.nasa.gov/topics/solarsystem/features/europa_20111116.html
 26. NASA, JPL, US Geological Survey. 1980. Voyager 1 image of Saturn and its ring taken Nov. 16, 1980, four days after closest approach to Saturn, from a distance of 5,300,000 km (3,300,000 miles). This viewing geometry, which shows Saturn as a crescent, is never achieved from Earth. NASA JPL Photojournal. Available at: <http://photojournal.jpl.nasa.gov>
 27. NASA JPL. 1981. Color image of Saturn's satellite, Mimas. The conspicuous crater on the surface of Saturn's moon Mimas is seen in this image taken by NASA's Voyager when the spacecraft was 540,000 kilometers (324,000 miles) from the satellite. Image ID: P-23265C. National Space Science Data Center

Photo Gallery. Available at: <http://nssdc.gsfc.nasa.gov/>

28. NASA JPL. 1981. Voyager 2 image of Saturn's satellite, Enceladus, taken from a distance of 112,000 km. Image ID number: FDS 44004.28. National Space Science Data Center Photo Gallery. Available at <http://nssdc.gsfc.nasa.gov/>
29. NASA JPL. 1981. False-color image of Saturn's rings. This highly enhanced color view was assembled from clear, orange and ultraviolet frames obtained from a distance of 8.9 million kilometers (5.5 million miles). Image ID: P-23953C. National Space Science Data Center Photo Gallery. Available at <http://nssdc.gsfc.nasa.gov/>
30. NASA JPL. 1981. Voyager 2 image of the Saturnian satellite Titan from 4.5 million km. The bright southern hemisphere and dark north polar region can be seen, along with visible cloud bands parallel to the equator. Image ID number: P-23929. National Space Science Data Center Photo Gallery. Available at <http://nssdc.gsfc.nasa.gov/>
31. NASA JPL. 1980. Layers of haze covering Saturn's satellite Titan are seen in this image taken by Voyager 1 at a range of 22,000 kilometers (13,700 miles). NASA JPL Photojournal. Available at <http://photojournal.jpl.nasa.gov>
32. NASA JPL. 2005. First radio occultation observations of Saturn's rings from the Cassini spacecraft. NASA JPL Photojournal. Available at <http://photojournal.jpl.nasa.gov>
33. Porco, C. 2005. Titan and the Lakefront? Astrobiology Magazine. Available at <http://www.astrobio.net>
34. ESA, NASA, NASA JPL, University of Arizona. 2005. Stereographic (fish-eye) projection taken with the descent imager/spectral radiometer onboard the European Space Agency's Huygens probe, when the probe was about 5 kilometers (3 miles) above Titan's surface. NASA JPL Photojournal. Available at <http://photojournal.jpl.nasa.gov>
35. NASA, NASA JPL, ESA, University of Arizona. 2005. Composite of Titan's Surface Seen During Descent. NASA JPL Photojournal. Available at <http://photojournal.jpl.nasa.gov>
36. Bortman, H. 2005. Lakeside Landing in Crème Brûlée. Astrobiology Magazine. Available at <http://www.astrobio.net>
37. McKay, C. 2005. Titan's Rocks of Ice: Talk by Chris McKay. Astrobiology Magazine. Available at <http://www.astrobio.net>
38. ESA Media Relations Division. 2005. Seeing, touching and smelling the extraordinarily Earth-like world of Titan. ESA. Available at <http://www.esa.int>
39. NASA, NASA JPL, ESA, University of Arizona. 2005. This image was returned by the European Space Agency's Huygens probe during its successful descent to land on Titan. This is the colored view, following processing to add reflection spectra data, and gives a better indication of the actual color of the surface. NASA JPL Photojournal. Available at <http://photojournal.jpl.nasa.gov>, and http://www.nasa.gov/mission_pages/cassini/multimedia/pia07232.html

40. Matsos, H. 2005. Did Fluid Once Flow on Titan? *Astrobiology Magazine*. Available at <http://www.astrobio.net>
41. NASA, NASA JPL, Space Science Institute. 2006. Cassini radar image of Titan's surface. The lakes, darker than the surrounding terrain, are emphasized here by tinting regions of low backscatter in blue. Radar-brighter regions are shown in tan. Published in Stofan et al. 2006. The lakes of Titan. *Nature* 445, 61–64 (4, January 2007) Available at http://solarsystem.nasa.gov/multimedia/display.cfm?Category=Spacecraft&IM_ID=4763
42. Iess, L., Jacobson, R.A., Ducci, M., Stevenson, D.J., Lunine, J. I., Armstrong, J.W., Asmar, S.W., Racioppa, P., Rappaport, N.J., Tortora, P. 2012. The Tides of Titan. *Science*, 337(6093), 457-459.
43. NASA JPL. 2012. Titan's Subsurface Ocean. *Astrobiology Magazine*. Available at <http://www.astrobio.net>
44. Hupp, E., Deutsch, G. 2005. NASA's Cassini Images Reveal Spectacular Evidence of an Active Moon. NASA Headquarters. Available at http://www.nasa.gov/home/hqnews/2005/dec/HQ_05422_Cassini_update_dpc_prt.htm
45. Postberg, F., Schmidt, J., Hillier, J., Kempf, S., Srama, R. 2011. A salt-water reservoir as the source of a compositionally stratified plume on Enceladus. *Nature* 474, 620-622.
46. NASA Ames Research Center. 2007. Pioneer 10 spacecraft sends last signal. The Pioneer Missions. NASA Ames Research Center.
47. NASA Ames. 2013. This image from Pioneer 11 shows Saturn and its moon Titan. The irregularities in ring silhouette and shadow are due to technical anomalies in the preliminary data later corrected. At the time this image was taken, Pioneer was 2,846,000 km (1,768,422 miles) from Saturn. NASA Multimedia. Available at http://www.nasa.gov/multimedia/imagegallery/image_feature_2483.html#UheWUrx54ZE
48. NASA JPL. 1986. This Voyager 2 picture of Oberon is the best the spacecraft acquired of Uranus' second-largest moon. The picture was taken from a distance of 660,000 km (410,000 miles). The color was reconstructed with images taken through the narrow-angle camera's violet, clear and green filters. NASA Solar System Exploration Page. Available at http://solarsystem.nasa.gov/multimedia/display.cfm?IM_ID=8364
49. NASA JPL. 1986. Uranus' moon Miranda is shown in a computer-assembled mosaic of images obtained by the Voyager 2 spacecraft. Miranda is the innermost and smallest of the five major Uranian satellites, just 480 kilometers (about 300 miles) in diameter. Nine images were combined to obtain this full-disc, south-polar view, which shows the varying geologic provinces of Miranda. The bulk of the photo comprises seven high-resolution images from the Voyager closest-approach sequence. Data from more distant, lower-resolution images were used to fill in gaps along the limb. NASA JPL Photojournal. Available at <http://photojournal.jpl.nasa.gov>
50. NASA JPL. 1986. A Voyager 2 image of Umbriel taken in 1986 from a distance of 557,000 km (346,000 miles). NASA Solar System Exploration Page. Available at <http://solarsystem.nasa.gov/planets/profile.cfm?Object=Umbriel>

51. NASA JPL. 1986. This mosaic of the four highest-resolution images of Ariel represents the most detailed Voyager 2 picture of this satellite of Uranus. Available at <http://science.gsfc.nasa.gov/690/Uranus.html>
52. NASA JPL. 1986. Titania—Highest Resolution Voyager Picture. NASA Space Images. Available at <http://www.jpl.nasa.gov/spaceimages/>
53. University of Hawaii, W.M. Keck Observatory. 2004. Stormy Uranus. Astrobiology Magazine. Available at: <http://www.astrobio.net>
54. Schirber, Michael. 2011. “Mission to Mysterious Uranus.” Astrobiology Magazine. Available at <http://www.astrobio.net>
55. NASA. 1989. NSSDC Photo Gallery: Neptune. Available at <http://nssdc.gsfc.nasa.gov>
56. Hammel, H. 2011. Interview from, “Tour of the Solar System.” StarTalk Radio Show with Neil Degrasse Tyson. Aired on February 21, 2011. Available at <http://www.startalkradio.net/show/tour-of-the-solar-system/>
57. NASA, JPL-Caltech, SwRI, MSSS. 2016. Jupiter’s north polar region, August 27, 2016, from 703,000 kilometers. Image Credit: NASA/JPL-Caltech/SwRI/MSSS. Available at <https://www.nasa.gov/image-feature/speeding-towards-jupiters-pole>
58. NASA, ESA, Showalter, M. (SETI Institute). 2011. NASA’s Hubble Discovers Another Moon Around Pluto. NASA. Available at: http://www.nasa.gov/mission_pages/hubble/science/pluto-moon.html
59. Gladstone et al. 2016. The atmosphere of Pluto as observed by New Horizons. *Science* 351(6279).
60. Bagenal et al. 2016. Pluto’s interaction with its space environment: Solar wind, energetic particles, and dust. *Science* 351(6279).
61. Gifford, S. 2016. Astro Update: The Ocean Beneath Pluto’s Wandering Heart. Astrobiology Magazine. Available at <http://www.astrobio.net/news-exclusive/astro-update-ocean-beneath-plutos-wandering-heart/>
62. Robuchon, G., Nimmo, F. Thermal evolution of Pluto and implications for surface tectonics and a subsurface ocean. *Icarus* 216(2), 426–439.
63. Hammond et al. 2016. Recent tectonic activity on Pluto driven by phase changes in the ice shell. *Geophysical Research Letters* 43(13), 6775–6782.
64. Nimmo and Pappalardo. 2016. Ocean worlds in the outer solar system. *Journal of Geophysical Research: Planets* 121(8), 1378–1399.
65. Moore et al. 2016. The geology of Pluto and Charon through the eyes of New Horizons. *Science* 351(6279).
66. NASA, JHUAPL, SwRI. 2016. Four images from New Horizons’ Long Range Reconnaissance Imager (LORRI) combined with color data from the Ralph instrument to create an enhanced color global view of Pluto. Available at <https://www.nasa.gov/image-feature/pluto-dazzles-in-false-color>
67. NASA, JHUAPL, SwRI. 2016. Rounded and bizarrely textured mountains on

- Pluto, informally named the Tartarus Dorsa. Available at <https://www.nasa.gov/feature/perplexing-pluto-new-snakeskin-image-and-more-from-new-horizons>
68. Stern et al. 2016. The Pluto system: Initial results from its exploration by New Horizons. *Science* 350(6258).
 69. NASA, JHUAPL, SwRI. 2016. The Mountainous Shoreline of Sputnik Planum. Available at <http://www.nasa.gov/feature/pluto-s-close-up-now-in-color>
 70. NASA, JHUAPL, SwRI. 2016. Dark, rugged highlands known as Krun Macula. Available at <http://www.nasa.gov/sites/default/files/thumbnails/image/krun-maculaunannotated2.jpg>
 71. Grundy et al. 2016. Surface compositions across Pluto and Charon. *Science* 351(6279).
 72. NASA/JHUAPL/SwRI. 2015. Near-sunset view of the rugged, icy mountains and flat ice plains. Available at <https://www.nasa.gov/image-feature/pluto-s-majestic-mountains-frozen-plains-and-foggy-hazes>
 73. Weaver et al. 2016. The small satellites of Pluto as observed by New Horizons. *Science* 351(6279).
 74. NASA, JHUAPL, SwRI. 2016. Pluto's haze layer shows its blue color in this picture taken by the New Horizons Ralph/Multispectral Visible Imaging Camera (MVIC). Available at http://www.nasa.gov/sites/default/files/thumbnails/image/blue_skies_on_pluto-final-2.png
 75. NASA, JHUAPL, SwRI. 2016. Pluto and its largest moon Charon more clearly than we could see them with telescopes. Available at <http://www.nasa.gov/image-feature/charon-and-pluto-strikingly-different-worlds>
 76. National Research Council. 2003. *New Frontiers in Solar System Exploration. Solar System Exploration Survey*, National Research Council. National Academy of Sciences. National Academies Press, Washington, DC.
 77. Fox, K.C. 2010. Kuiper Belt of Many Colors. NASA Goddard Space Flight Center. Available at <http://www.nasa.gov/topics/solarsystem/sunearthsystem/main/kuiper-colors.html>
 78. Carlowicz, M. 2013. A Voyager Far From Home: NASA JPL Planetary Photojournal images PIA01967 and PIA00452 (Image Credit: NASA JPL). NASA Earth Observatory. Available at <http://earthobservatory.nasa.gov/IOTD/view.php?id=79091>
 79. Sagan, C. 1994. *Pale Blue Dot: A Vision of the Human Future in Space*. Ballantine Books, Random House, Inc. New York, NY.
 80. Gurnett, D.A., Kurth, W.S., Burlaga, L.F., Ness, N.F. 2013. In Situ Observations of Interstellar Plasma With Voyager 1. *Science*, 1241681, Published online 12, September 2013

